

Unleash your inner geographer

by going local and sharing.

Martin Pluss

martinpluss@gmail.com

@plu

What to expect?

- First Principles – Are you a Geographer?
- Individual engagement - Hornsby, Tamworth, Main Beach, Bulahdelah, Dunedoo.
- Sharing engagement – activity, HSC resources, working with non-geographers (Melbourne, Yass and Hornsby homeless).
- Thoughts on top HSC Results: Shanghai, General Capabilities AC planning.
- Approach geography from different angle: - personal interests
- What can you do?
 - Zoom in and Zoom out

First Principles: Are you a geographer?

- The resident of Strathfield, Redfern, Bowral, St Ives, Berowra, Galston and Pennant Hills
- The visitor of Bulahdelah, Main Beach, Tamworth
- The explorer groupie
- The runner
- The geography teacher who shares and uses technology

Workshop Resources martinpluss.com

Martin Pluss 4 minutes ago

plu@martinpluss.com



Martin Pluss

100 things

Local Geography

Local Geography
Documents

My first 6 decades

The Family

Sitemap

Martin Pluss

I [The Runner](#) | [Thoughts and Selfhelp](#) | [The Educator](#) |



I martinpluss@gmail.com 1

I twitter.com/plu 1

I martinpluss.edublogs.org 1

I martinpluss.wordpress.com 1

I martinpluss.wikispaces.com/home I

I Mobile: 044RUNNING 1

I Skype: martinpluss60 1

[GTANSW Conference Resources](#)



I am a Geography teacher and Dean of Learning who mixes up running with a bit of life.

Resources to share

- Release your inner geographer PPT
- HSC Syllabus Guides
- NSW AC Syllabus Summary for local and regional geography
- NSW Planning resources - a selection
- Digital Skills for Teachers and students
- ICT Standards
- Twitter - @plu
- Facebook - Martin Pluss/ Pluruns
- Email- martinpluss@gmail.com
- LinkedIn Martin Pluss

The geographer: Strathfield – the inspiration

"“For whatever you’re doing, for your creative juices, your geography’s got a hell of a lot to do with it,” he said. “You really have to be in a good place, and then you have to be either on your way there or on your way from there.”

Source: Neil Young

http://www.nytimes.com/2012/09/23/magazine/neil-young-comes-clean.html?_r=2&smid=tw-share

The teacher: geography students

Hi Patrick and Moira (and others if they teach year 7 later),

Today I linked what is Geography to the local area of where each girl lived. It also helps me to get to know them.

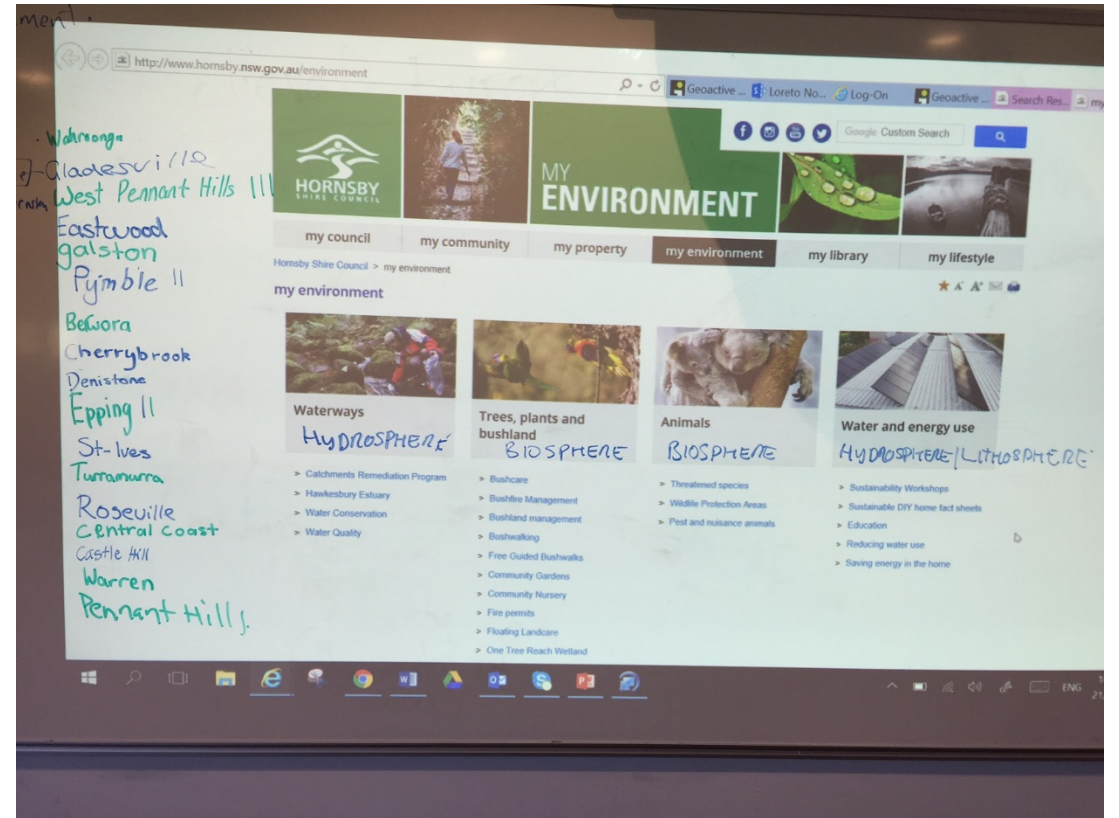
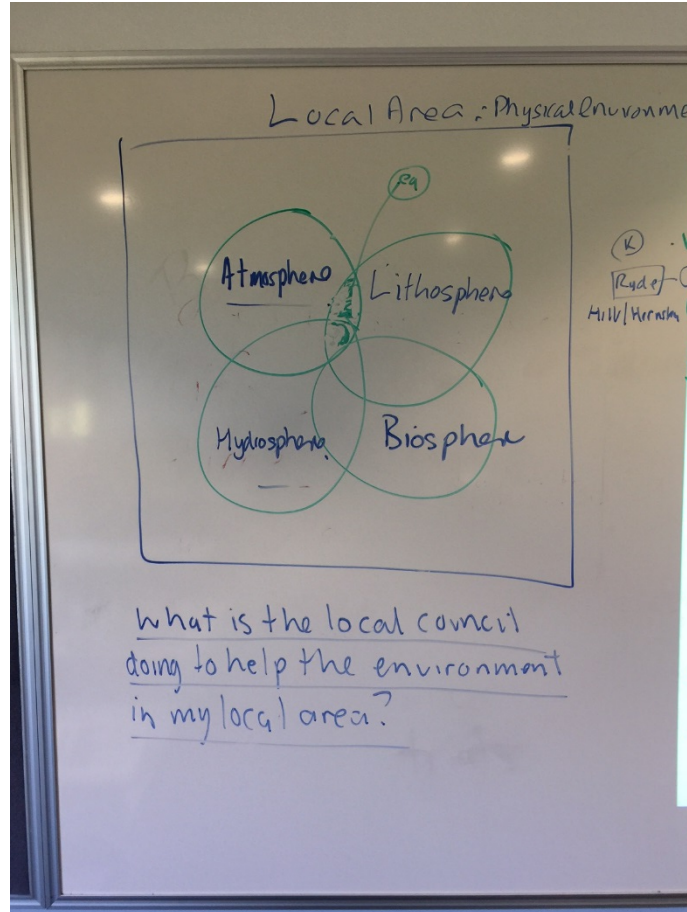
1. I started the lesson weaving a story about their trip to school. Were they cold, was there frost on the ground(Atmosphere), did they walk up or down the driveway when they left home (lithosphere), did they hear any animals (biosphere). Then I linked the spheres - was it cold on one side of their house compared to the other? (lithosphere/atmosphere), where does the water run to in your backyard? (hydrosphere/lithosphere).....
2. Then I linked the experiences of the environment to the geographical concepts ie: spheres.
3. Following this I got the girls to write the suburbs they live in on the board, linked the suburbs to the respective councils and then took them to the council websites to see what the council was doing to help the local environment. This was as a writing activity.

Attached are two photos of how it played out on the whiteboard/ data projector.

Next stop the local human environment.

Martin

Day Students: Local Environment/Local Council

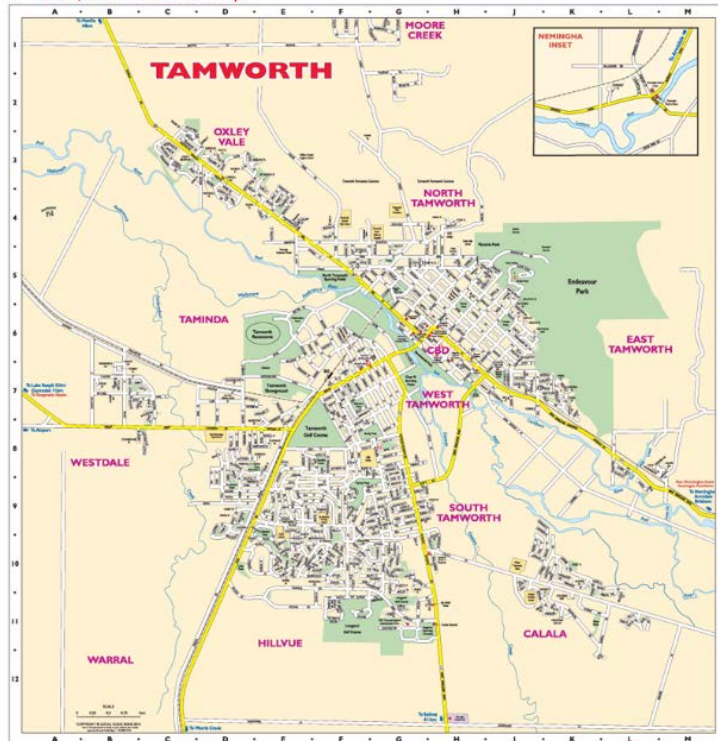


Boarding Students: Tamworth local view from an outsiders perspective

Work to do – Tamworth Tourism

Imagine you are going to visit Tamworth as a country town as a tourist

2. Draw/source a location map



3. Go to the local council website for the town and see what the Council states are the key activities in the country town

- Country Music festival – normally late to mid-January
- Capitol Theatre Tamworth
- Golden Guitar
- Pool
- Kids play centre
- Wax museum
- Marsupial Park
- Endeavour park
- Northern Inland Centre of Sporting Excellence
- Lookouts
- Walking and Cycling Tracks
- Australian Equine Horse Centre
- Sporting fields
- Skate parks
- Tamworth Sports Dome
- Local Sporting groups

4. Search Tourism NSW and see what it says about visiting country towns in NSW especially Tamworth

Tourism is an important aspect of the commerce and culture of the Tamworth region. This is a large and diverse area, with an exciting array of pursuits and attractions on offer to residents of all our communities as well as visitors to the region. Whether you live here or are visiting, there are some useful resources in this section from transport providers to help you get here and travel around the region. – **Tamworth Council Centre**

Tamworth student work and show video



Main Beach David Chapman



Bulahdelah regional and township studies



Dunedoo nonformal education



#blazeaid



Martin Plüss

13 hrs · Dunedoo · 🌐 ▼

I was not very good at cooking for 100 #blazeaid volunteers.

I did, however, have some great discussions with people who travel around the country for months at a time helping those who suffer from natural disasters.

I was, however, reasonable at washing up after feeding 100 people. I have never seen so many large pots and pans.



👍 Like 💬 Comment ➦ Share

Blaze Aid
Helping Communities Rebuild
After Natural Disasters

HOME LEND A HAND ▼ NEED A HELPING HAND ▼ DONATIONS ▼ NEWS & MEDIA ▼ SPONSORS ABOUT US FAQ CONTACT US

DUNEDOO NSW (FIRE 2017)

Sir Ivan Fire 54870 ha

Camp Status: **OPEN (Closing est 22nd Sept)**

Fencing Starting: 27th February 2017

Address: Dunedoo Showgrounds, Wargundy St, Dunedoo NSW 2844

GPS co-ordinates:

Co-ordinator: Laurie Dawson: 0418 349 317

Email: blazeaid.dunedoo@gmail.com

[Thank You letter from Laurie Dawson to the Dunedoo community](#)

Sharing Engagement



- 2005
- Activity
- Celebrity pictures

Picture Activity

Sharing and social media

Home Moments Notifications Messages Search Twitter

MOONEY MOONEY CK

Martin Plüss
@plu

I am a geography teacher and Dean of Learning at an independent Girls School in Sydney. BTW - I also run.

Sydney, New South Wales
martinpluss.com

TWEETS 10.1K FOLLOWING 1,069 FOLLOWERS 2,104 LIKES 64 LISTS 47

Subscribed to Member of

Politicians 64 Members

Locals

Geography Teachers Online Australia

Geography Teachers Online Austr...

John Hall, my geography teacher at school inspired me to a lifelong interest in geography and a curiosity about our world which has stayed with me through my life. Geography is a living, breathing subject, constantly adapting itself to change. It is dynamic and relevant. For me geography is a great adventure with a purpose.

— Michael Palin —

Joined Share Notifications

Discussion Members Events Photos Files

Write Post Add Photo / Video Create Poll More

ADD MEMBERS

Martin Plüss 4 minutes ago

Martin Plüss

100 things

Local Geography Documents

My first 6 decades The Family Sitemap

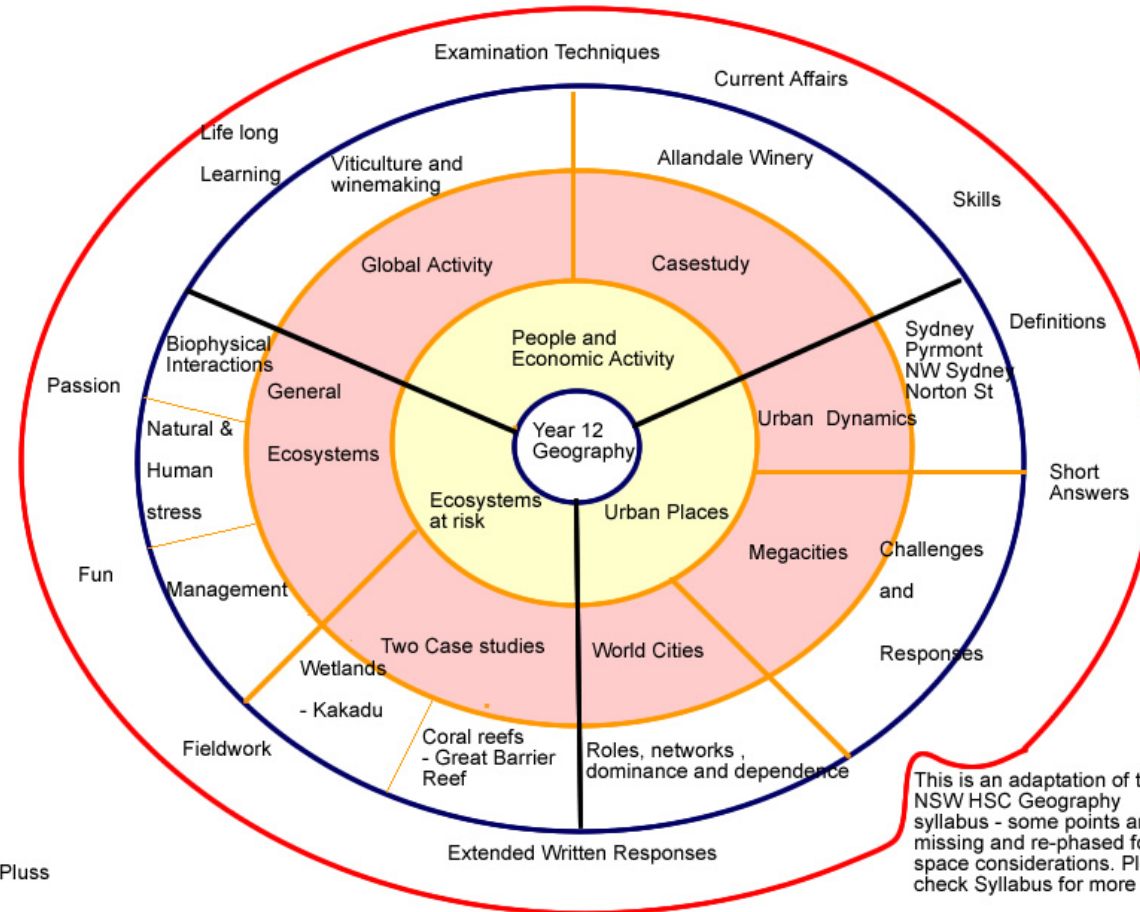
I [The Runner](#) | [Thoughts and Selfhelp](#) | [The Educator](#) |

1 martinpluss@gmail.com 1
1 twitter.com/plu 1
1 martinpluss.edublogs.org 1
1 martinpluss.wordpress.com 1
1 martinpluss.wikispaces.com/home 1
1 Mobile: 044RUNNING 1
1 Skype: martinpluss60 1

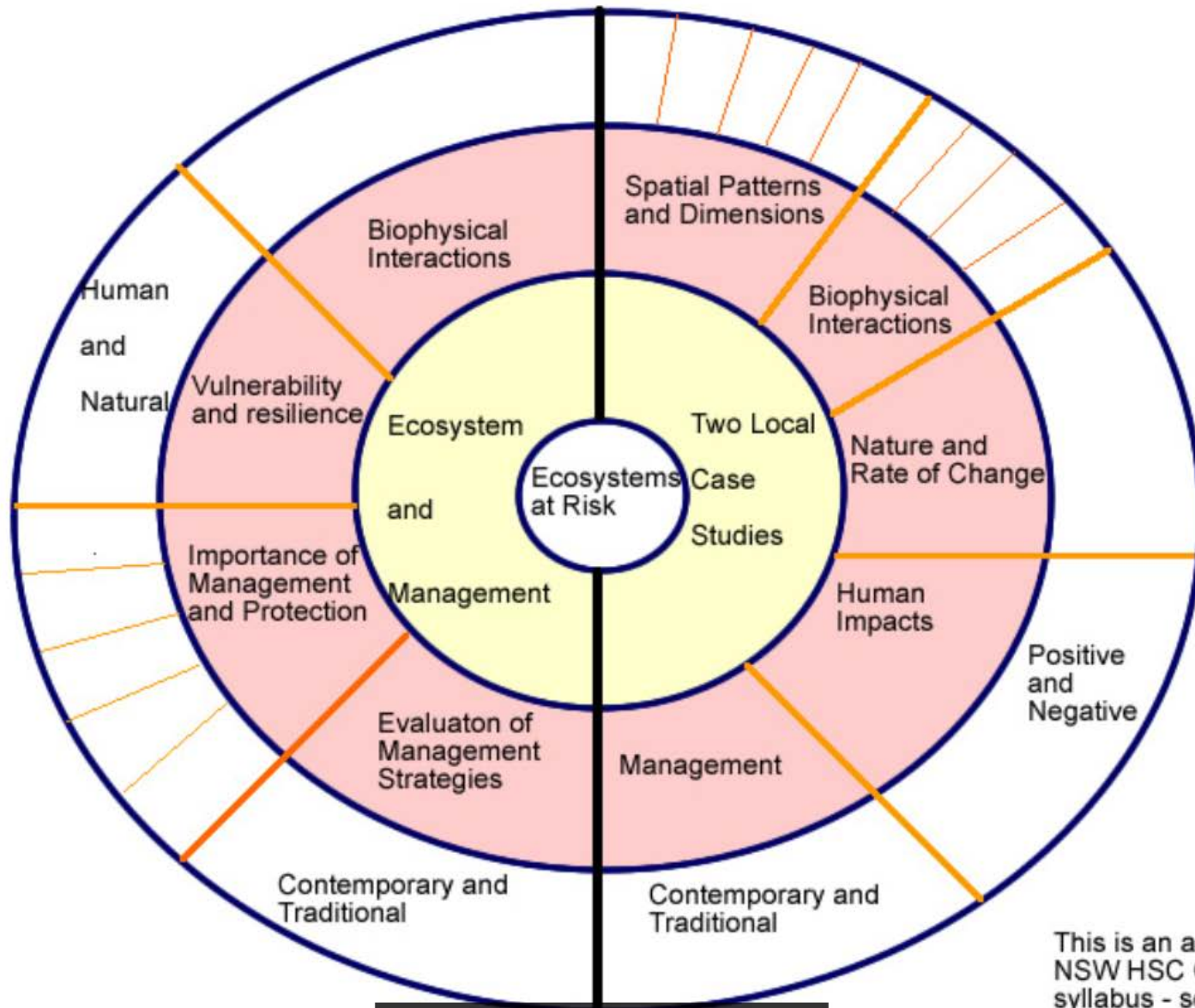
[GTANSW Conference Resources](#)

I am a Geography teacher and Dean of Learning who mixes up running with a bit of life.

Examples of Sharing – HSC Flow Charts



This is an adaptation of the NSW HSC Geography syllabus - some points are missing and re-phased for space considerations. Please check Syllabus for more detail.



Martin Pluss



This is an adaptation of the NSW HSC Geography syllabus - some points are missing and re-phased for space considerations. Please check Syllabus for more detail.

Melbourne Yarra River



Martin Plüss added 5 new photos.

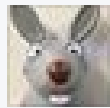
January 23 · Melbourne, VIC · 🌐 ▼

I wonder if the Yarra is tidal or is there a weir downstream? Not much room.
#geography



Responses

 Helen Pretty, Goji Enomoto and 3 others



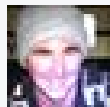
Greg Robinson It's tidal, but it's also rained a fair bit. There is an upstream weir at Dight Falls in Clifton Hill to ensure the city doesn't flood. What you see is pretty common.

Unlike · Reply ·  1 · January 23 at 12:45pm



Blair Venn That's one brave pilot

Unlike · Reply ·  1 · January 23 at 12:57pm



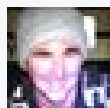
Martin Plüss Good point Greg. Did not think of upstream and rain. You can see the people at the back ducking.

Unlike · Reply ·  1 · January 23 at 1:05pm · Edited



Andy Gorton Whichever way, last time I was there next to the river a beer cost me 12 bucks!

Like · Reply · January 23 at 6:47pm



Write a comment...



#Yass

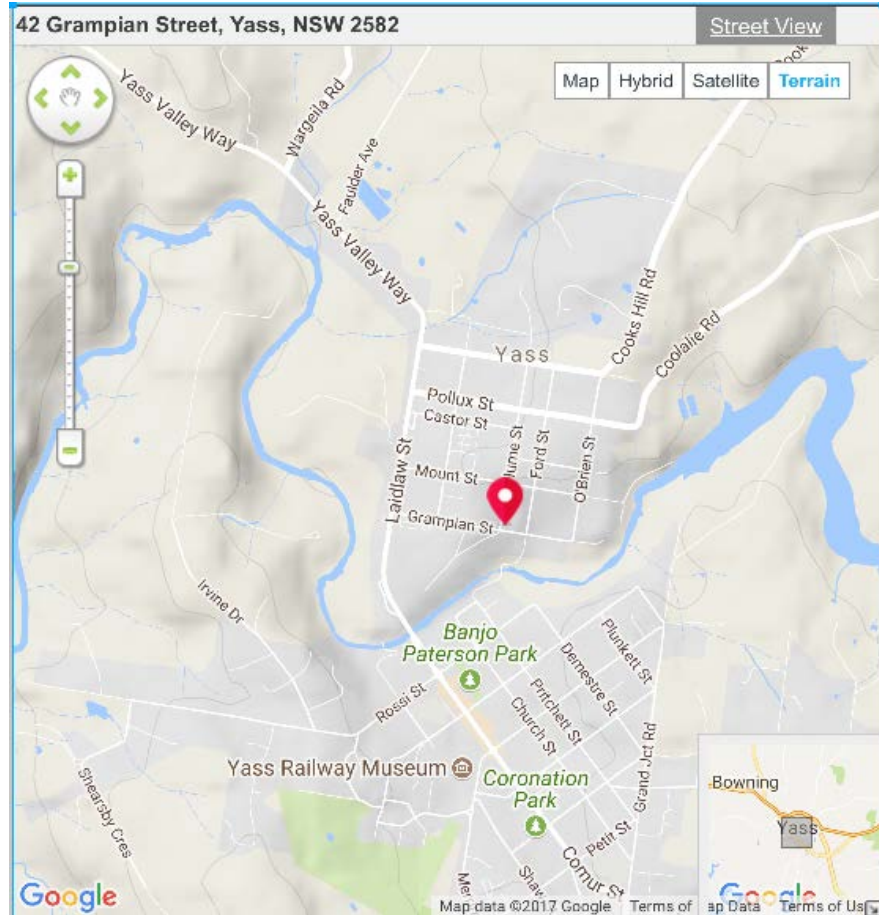


Figure 1: Precinct Map – Yass Town Centre (Development Density)



Figure 2: Precinct Map – North Yass (Development Density)

Homeless Hornsby need a process and awareness



Homeless Hornsby

The Sydney Morning Herald
New South Wales

SWITCH AND BE REWARDED

NSW News Sydney Traffic NSW State Election 2015 Quizzes

You are here: Home » NSW News »

Homeless woman dies in Hornsby bushland during extreme cold weather

July 15, 2015 - 2:51PM

210 reading now [☆ Read later](#)



Patrick Begley

Journalist

[View more articles from Patrick Begley](#)

[Follow Patrick on Twitter](#) [Follow Patrick on Google+](#) [Email Patrick](#)

[Tweet](#) 143 [Share](#) 1.4k [Share](#) 0 [Share](#) [Pin it](#) submit

[Email article](#) [Print](#) [Reprints & permissions](#)

Homeless woman dies in Hornsby bushland during extreme cold weather

July 15, 2015 - 2:51PM

210 reading now [☆ Read later](#)



Patrick Begley

Journalist

[View more articles from Patrick Begley](#)

[Follow Patrick on Twitter](#) [Follow Patrick on Google+](#) [Email Patrick](#)

[Tweet](#) 143 [Share](#) 1.4k [Share](#) 0 [Share](#) [Pin it](#) submit

[Email article](#) [Print](#) [Reprints & permissions](#)



Homeless Hornsby



Martin Plüss added 3 new photos.

July 24 at 12:53am · Edited ·

Repair the world

Each time I go to Hornsby I park the car in the car park on the old side of the township and walk over the railway and the foot bridge over George Street. As I left the bridge a few months ago I spotted a homeless man who had set himself up with gear to keep warm a bed and was doing art work. I thought to myself that was a good spot to stay essentially out of the elements.

...
Continue Reading



Homeless woman dies in Hornsby bushland during extreme cold weather

July 15, 2016 - 2:11PM

218 reading now



Patrick Begley

Journalist

View more articles from Patrick Begley

Follow Patrick on Twitter · Follow Patrick on Google+ · Email Patrick

Tweet (13) · Like (14) · Share (3) · Print · Submit

Small article · Post · Reprints & permissions



Blair Joscelyne, Stevie Wonder-dog, Ben Rickards and 63 others like this.



Brett Sammut That is really sad.

July 24 at 5:20am · Unlike · Like 2



Leonor Lawler so sad ...

July 24 at 7:13am · Unlike · Like 1



Scott Holz "I wondered why somebody didn't do something - then I realised..... I was somebody"

July 24 at 7:29am · Unlike · Like 2



Paul Thompson I 'see' the homeless situation all over the greater metro are in Sydney.

Some councils see and try to address the situation with assistance from various welfare agencies.

Others just move 'the problem' or make them very uncomfortable. An example putting new seats with no way of laying down. ... See More

July 24 at 7:43am · Unlike · Like 1



Fiona Renshaw I'd have a chat with Bernard Fehon the founder of CEO Sleepout.

July 24 at 7:49am · Unlike · Like 1



Christine Bellemore Felicity Coonan

July 24 at 8:00am · Unlike · Like 1



Scott Holz Homelessness NSW - Katherine McKernan is the CEO - very approachable.

July 24 at 8:07am · Unlike · Like 1



Summer Howarth This is an incredible post and I'm looping in some of my past geography student too. It's an incredibly saddening issue and a commentary of where we've gone wrong. The homelessness in the Melbourne CBD is overwhelming and getting worse. City planners b... See More

July 24 at 8:08am · Unlike · Like 4



Summer Howarth Georgia Hill Chrissie Grun

July 24 at 8:08am · Unlike · Like 1

.....and now



Avoca Beach



Thoughts on top HSC Results

So how do we do both content and process?

Ayres' study of 25 exceptional teachers

Top 1% of exam results for over 6 years

Their students do *worse* in other subjects

Findings:

1. Not exam driven – often chose difficult options and went beyond syllabus
2. Passion for their subject – teaching structured and teacher-led
3. Used whole-class question and answer
4. Emphasised holistic understanding & big picture
5. No spoon-feeding or answers during a task – students had to write their own notes

(Ayres *et al* 2004)

Shanghai

This chapter looks at how China has made rapid progress, taking Shanghai and Hong Kong as examples of innovation. The main lessons include the government's abandonment of a system built around "key schools" for a small elite and its development of a more inclusive system in which all students are expected to perform at high levels; greatly raising teacher pay and upgrading teacher standards and teacher education; reducing the emphasis on rote learning and increasing the emphasis on deep understanding, the ability to apply knowledge to solving new problems and the ability to think creatively. All of these are reflected in deep reforms to the curriculum and examinations. These changes have been accompanied by greater curricular choice for students and more latitude for local authorities to decide on examination content, which in turn is loosening the constraints on curriculum and instruction.

Reforming exams in Shanghai

Shanghai has opted to modify the mode and contents of examinations so they serve the purpose of curriculum and pedagogy reform. In Chinese phraseology, public examinations are the baton that conducts the entire orchestra – rather than removing the baton, the alternative is to modify the baton so that it conducts good music.

In 1985, Shanghai was given the privilege of organising the higher education entrance examination for universities under its jurisdictions. Since then, a lot of effort has gone into reforming assessments and examinations. Generally, exam changes match reform expectations in curriculum and pedagogy. As an example, integrated papers are required that cross disciplinary boundaries and test students' capacity to apply their knowledge to real-life problems. As another example, examination questions provide students with information not covered in the syllabuses and so test their abilities in applying what they know to new problems. Multiple-choice questions have disappeared from the city's public examinations.

Australian Curriculum General Capabilities

Literacy

- Composing texts through speaking, writing and creating
- Comprehending text
- Grammar knowledge
- Creating texts through speaking, writing and creating
- Word knowledge
- Visual knowledge

Numeracy

- Using measurement
- Estimating and calculating with whole numbers
- Recognising and using patterns and relationships
- Using fractions, decimal places, percentages, ratios and rates
- Using spatial reasoning
- Interpreting statistical information

ICT Capabilities

- Applying social and ethical protocols and practices when using ICT, and managing and operating ICT
- Investigating with ICT
- Creating with ICT
- Communicating with ICT

Critical and creative thinking

- Reflecting on thinking and processes
- Inquiring, identifying, exploring and organising information and ideas
- Generating idea, possibilities and actions
- Analysing, synthesising and evaluations reasoning and procedures.

Personal and social capability

- Self-management
- Self-awareness
- Social awareness
- Social management

Ethical understanding

- Exploring values, rights and responsibilities
- Understanding ethical concepts and issues
- Reasoning in decision-making and actions

Intercultural understanding

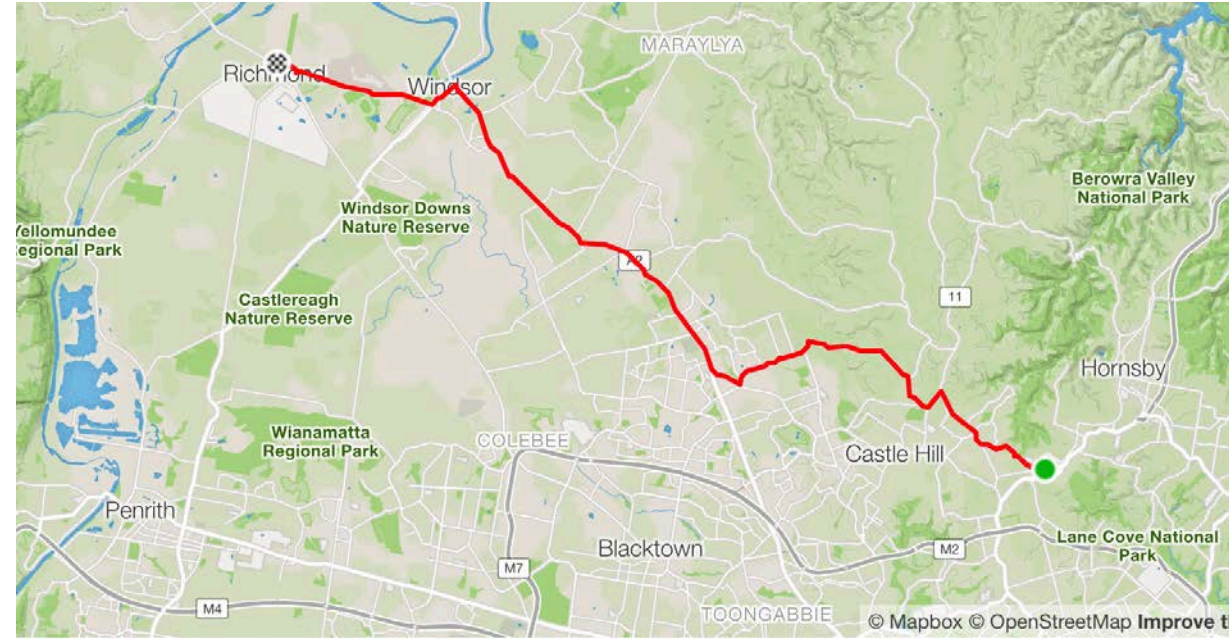
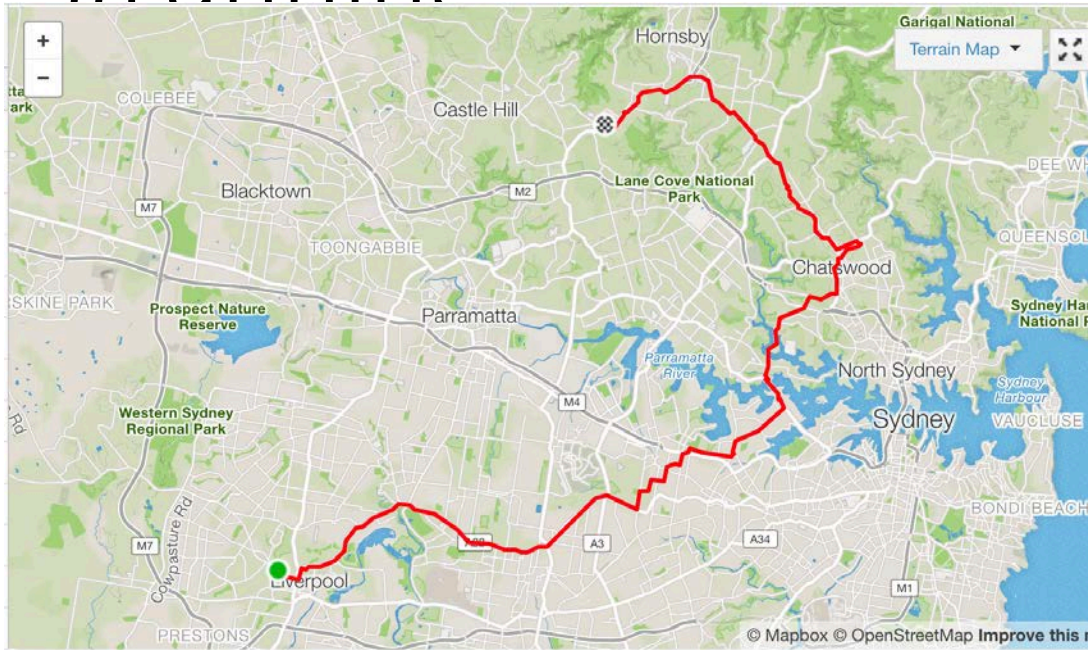
- Recognising culture and developing respect
- Interacting and empathising with others
- Reflecting on intercultural experiences and taking responsibility

...and now plan for the AC

Geography Years 7-10 Matrix

Stage 4	Year 7	Martin Pluss Loreto Normanhurst
Landscapes and Landforms	Key Inquiry Questions	
<p>Landscapes and landforms</p> <ul style="list-style-type: none"> Investigate different landscape and the geomorphic processes that create distinctive landforms , for example: (ACHGK048, ACHGK050) Identification of a variety of landscapes and landforms explanation of geomorphic processes that create landforms eg weathering, erosion, deposition, tectonic activity examination of ONE landscape and its distinctive landforms <p>Value of landscapes and landforms</p> <ul style="list-style-type: none"> Investigate the aesthetic, cultural, spiritual and economic value of landscapes and landforms for people, including Aboriginal and Torres Strait Islander Peoples, for example: (ACHGK045) explanation of the aesthetic value of landscapes and landforms to culture and identity description of the cultural and spiritual value of landscapes or landforms in different places Identification of how a landscape can have economic value for different people <p>Changing landscapes</p> <ul style="list-style-type: none"> Investigate the human causes and effects of land degradation, for example: (ACHGK051) Identification of the ways people utilise and change landscapes description of the impact of a range of human activities on landscapes examination of ONE type of landscape degradation including its spatial distribution, causes and impact <p>Landscape management and protection</p> <ul style="list-style-type: none"> Investigate ways people, including Aboriginal and Torres Strait Islander Peoples, manage and protect landscapes, for example: (ACHGK052) description of the nature and extent of landscape protection across a range of scales eg locally protected places, national parks, world heritage listing examination of management and protection strategies for ONE landscape assessment of the contribution of Aboriginal and Torres Strait Islander Peoples' knowledge to the use and management of an Australian landscape or landform <p>Geomorphic hazard</p> <ul style="list-style-type: none"> Investigate ONE contemporary geomorphic hazard including causes, impacts and responses, for example: (ACHGK053) description of the spatial distribution of the disaster explanation of geomorphic processes causing the disaster and its impacts examination of the responses of individuals, groups and government to the impact of the disaster discussion of management strategies to reduce the future impact of similar natural hazard events including the role of technology in monitoring and predicting geomorphic hazards 	<ul style="list-style-type: none"> Why is there a diversity of landscapes and landforms on Earth? What environmental and human processes form and transform landscapes and landforms? Why do people value landscapes and landforms? To what extent are landscapes and landforms sustainably managed and protected? <p>Local and regional context</p>	<p>Geographical Concepts</p> <ul style="list-style-type: none"> Place Space Environment Interconnection Scale Sustainability change <p>Geographical Inquiry Skills</p> <ul style="list-style-type: none"> Acquiring Processing communicating <p>Geographical Tools</p> <ul style="list-style-type: none"> Maps M Fieldwork F Graphs and statistics GS Spatial Technologies ST Visual Representations <p>General Capabilities</p> <ul style="list-style-type: none"> Literacy Numeracy Information and Communication Technology (ICT) capability Critical and creative thinking Personal and social capability Ethical understanding Intercultural understanding

Approach geography from different angle: - #runningσ



Tamworth- Peel River



Tamworth Peel -River



Tamworth 6 km run night

Tamworth 6 km Exploring Afternoon Run

RUN July 27, 2017

6.0 km 39:48 6:37 /km 576

Distance Moving Time Avg Pace Calories



Martin Pluss

Sydney, NSW, Australia

Follow on Strava

2017 STATS		
93	688.4	162
Activities	kilometers Run	Followers

KM Splits on this Run

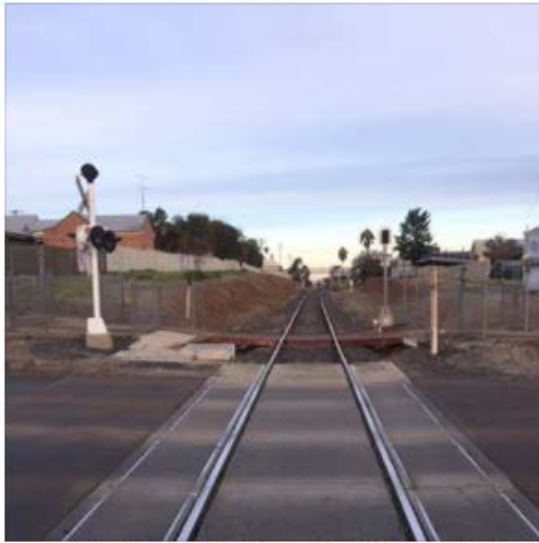




Martin Plüss added 21 new photos.

2 hrs · Tamworth ·

Exploring 6km run of Tamworth.



Like Comment Share



Approach geography from different angle: - #Music

- Beach House in the Blue Mountains
- Toms Diner

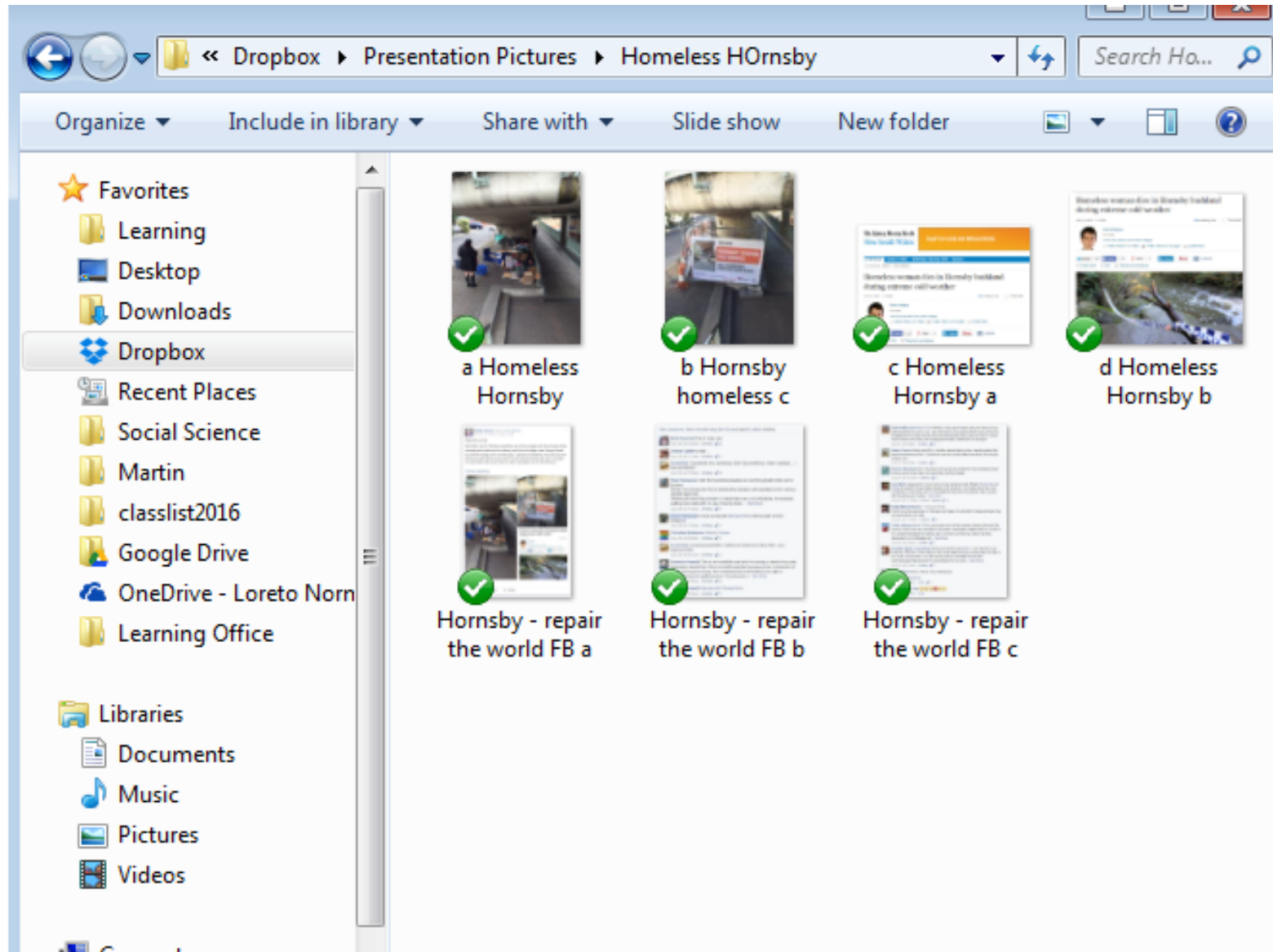
What can you do?

- Engage with the local regional, state and national resources
- Join local associations as a lurker or be active
- Attend a local council meeting or at the very least download the business papers.
- Harvest all the secondary sources.
- Be aware and perhaps even engage in the local political processes.
- One night a week or month go to a local event.

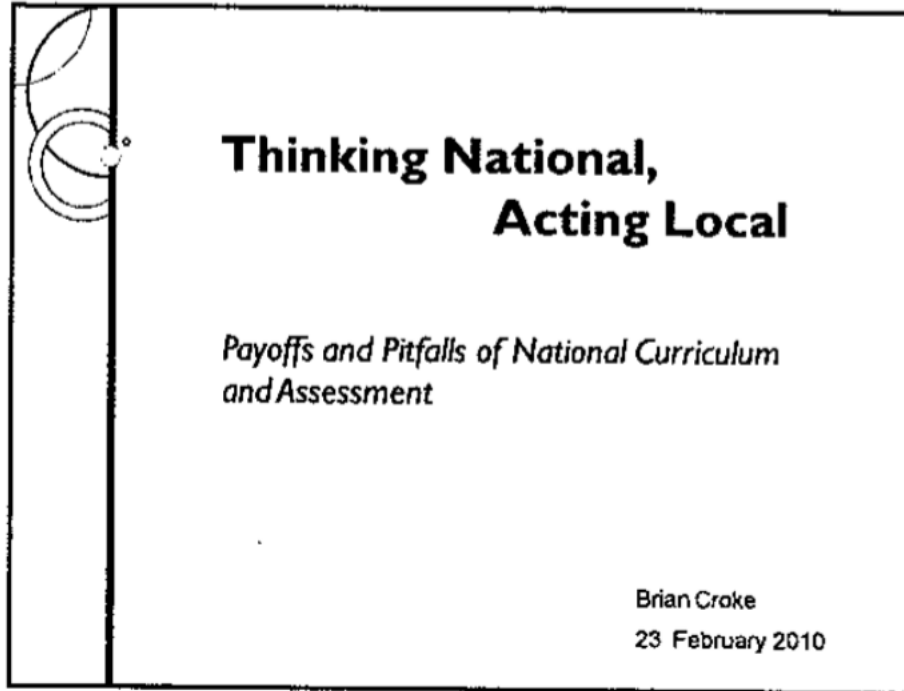
Zoom Out

Zoom in

One tip:- Presentation Pictures



Go Local – primary and secondary resources



- Become aware
- Become involved

Hornsby Action Group



Newcastle, do not take a step backward

OPINION: Act now to stop the 'Sydney debacle' happening here.

THEHERALD.COM.AU

 Like  Comment  Share



  Lorette Quinlan and 4 others

Chronological 

1 Share



Martin Plüss The commuter issue aside (and I acknowledge it is an issue) the amenity was quite nice along the riverbank last weekend when I was there. With future easy access from the south there is a lot of potential for CBD rejuvenation and bringing people into the area. Clearly, though, still a work in progress.

Like · Reply · 18 hrs · Edited



Alan Mansfield Three years ago they cut the line - the delay is utterly inexplicable and when they open it they smokescreen it by up fronting the memorial to serviceman. Still think that Greenway 2.0 has legs reintroducing the estuary environment to the city; oh no m... [See More](#)

Like · Reply ·  1 · 15 hrs



Neil Mansfield The Toy Tram to Box Town is being built for future residents. Meanwhile, the inner city suburbs nearby have been "devitalised": more ugly rail, more traffic & parked cars, more danger & inconvenience for pedestrians, and less trees.

Like · Reply · 15 hrs · Edited

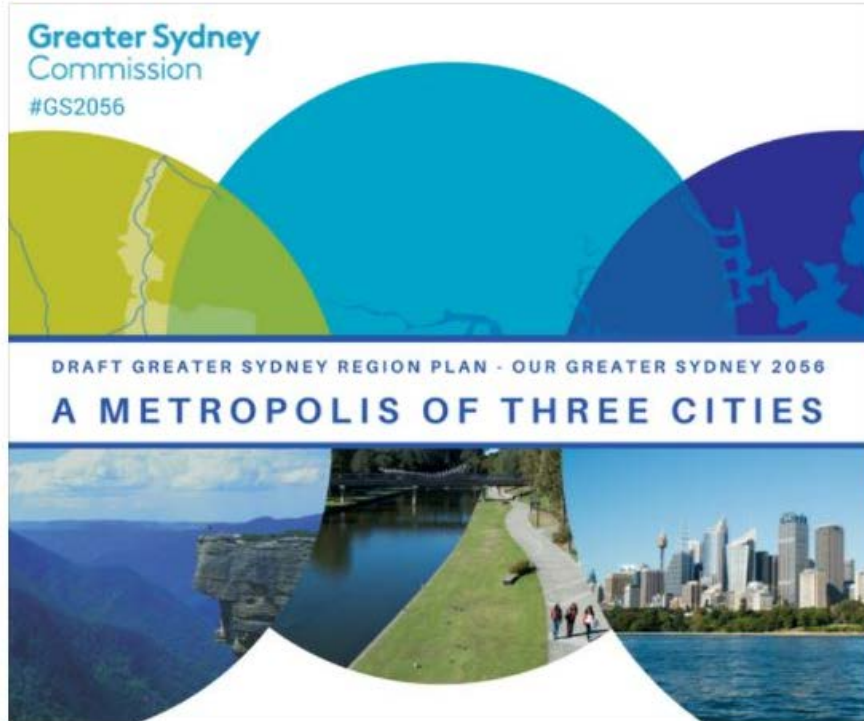


Greater Sydney Commission

Yesterday at 2:38pm · 🌐

Today we've launched a 40-year vision for Greater Sydney as a metropolis of three cities, rebalancing Greater Sydney's structure to transform how we live, work and travel. The draft Greater Sydney Region Plan is the first to be prepared concurrently with the State's Future Transport and Infrastructure plans, which now share a common vision that better aligns housing with jobs, transport, schools, health facilities and public places.

Read the draft Greater Sydney Region Plan, have your say on the future of your city #GS2056 <https://www.greater.sydney/draft-greater-sydney-region-plan>



Martin Plüss This so interesting, challenging to my evolving ideas and has a long timeline. It is interesting for the Pennant Hills and #Hornsby Shire area to see how we fit in and how the different levels of government can work together to achieve a common vision. I find it a challenge because on one hand I would like some development so I can stay in the area in my retirement and perhaps my children might be able to afford to stay in medium density housing. On the other hand though I like the low density bushland nature of the area, the amenity could be improved. Finally, the fact that it has a long time frame encourages me to think that we are involved in decision making to make an area better even if some of us don't get to experience the hopefully good outcomes. **Martin Plüss**

Like · Reply · 28 mins · Edited

Greater Sydney Commission

Some great points Martin, collaboration across Government is key to our vision.

We also want communities to be involved in planning for their local infrastructure and services. Your feedback will be integral in the development of a final Plan that meets the needs of current and future generations - <https://www.greater.sydney/get-involved>

- LT



Get involved | Greater Sydney Commission

greater.sydney

1 d Like Reply

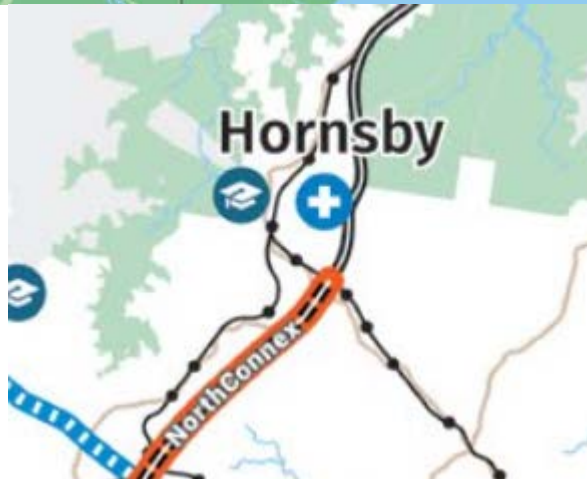
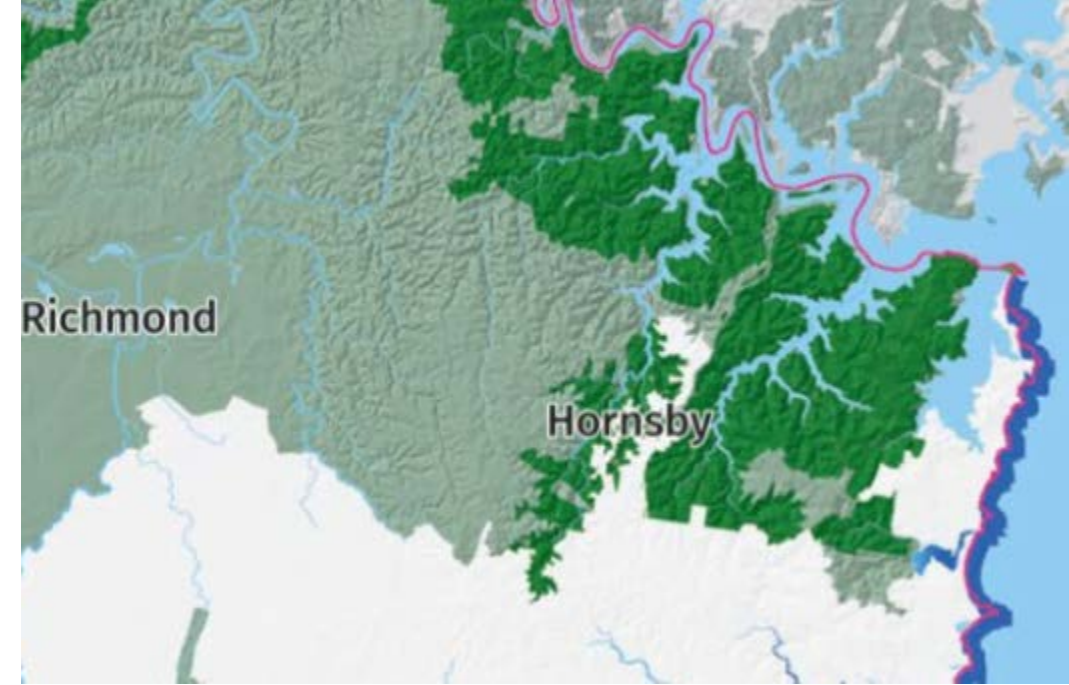
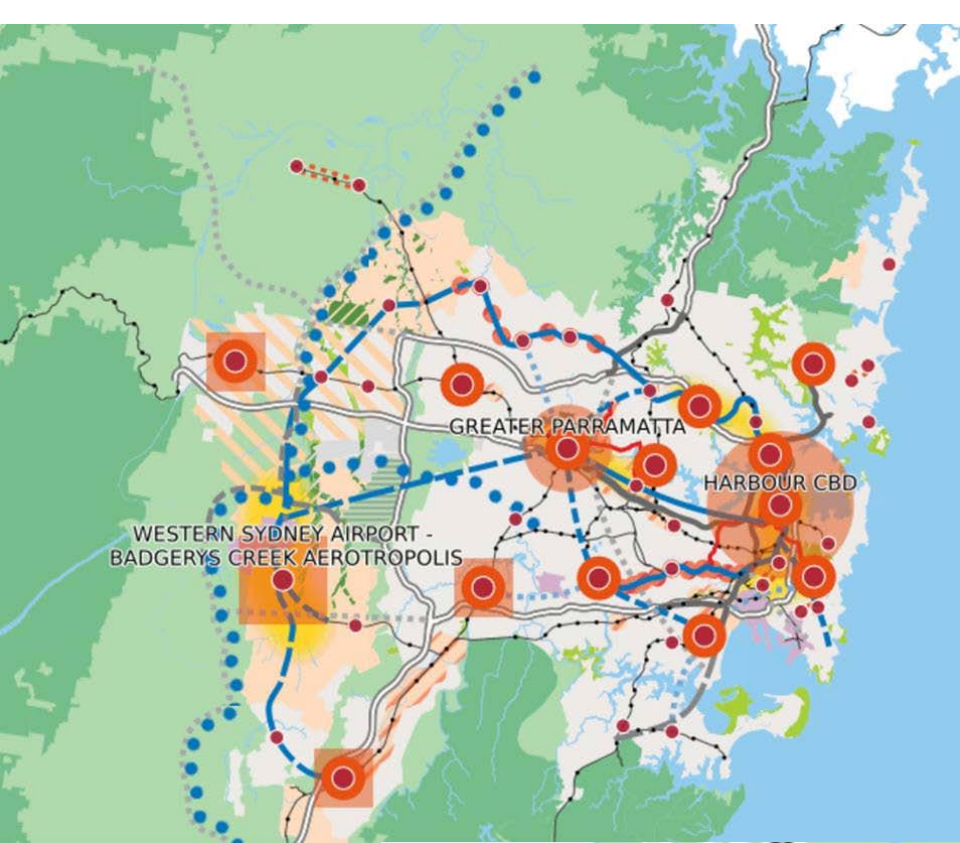
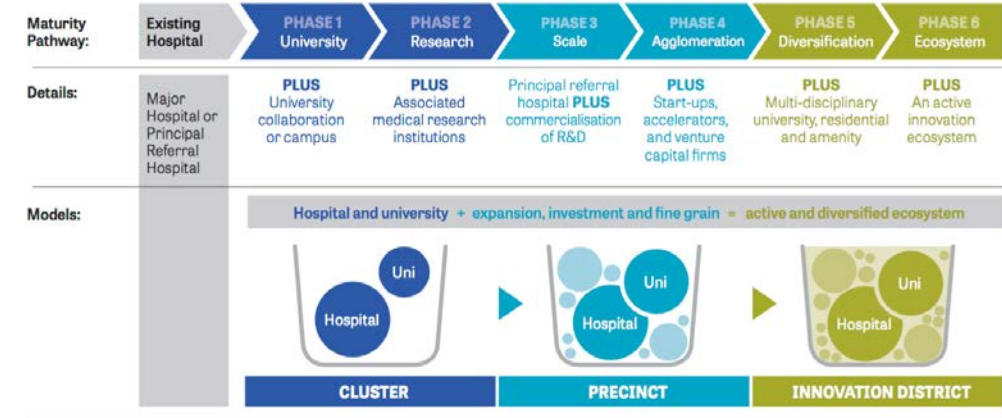


Figure 37: Maturity pathway for health and education precincts



Productivity Uplift:

+ 20%

+ 50%

Greater Sydney Commission Our Greater Sydney 2056 A metropolis of three cities – connecting people

Martin Pluss

martinpluss@gmail.com

Twitter: @plu

Pennant Hills, Hornsby Shire

This submission is written from the perspective of a resident of Pennant Hills in Hornsby Shire who is also a geography teacher.

The draft regional plan outlines three cities: Eastern Harbour City, Central River City and Western Parkland City. The paper proposes a vision for 2056 and outlines the plan in the framework of the past, present and future. There is a focus on infrastructure/collaboration, livability, productivity, sustainability, the structure of the plan and implementation

<https://www.greater.sydney/draft-greater-sydney-region-plan>

The relevance for Pennant Hills/ Hornsby Shire according to the snapshot includes the following:

The relevance for Pennant Hills/ Hornsby Shire according to the snapshot includes the following:

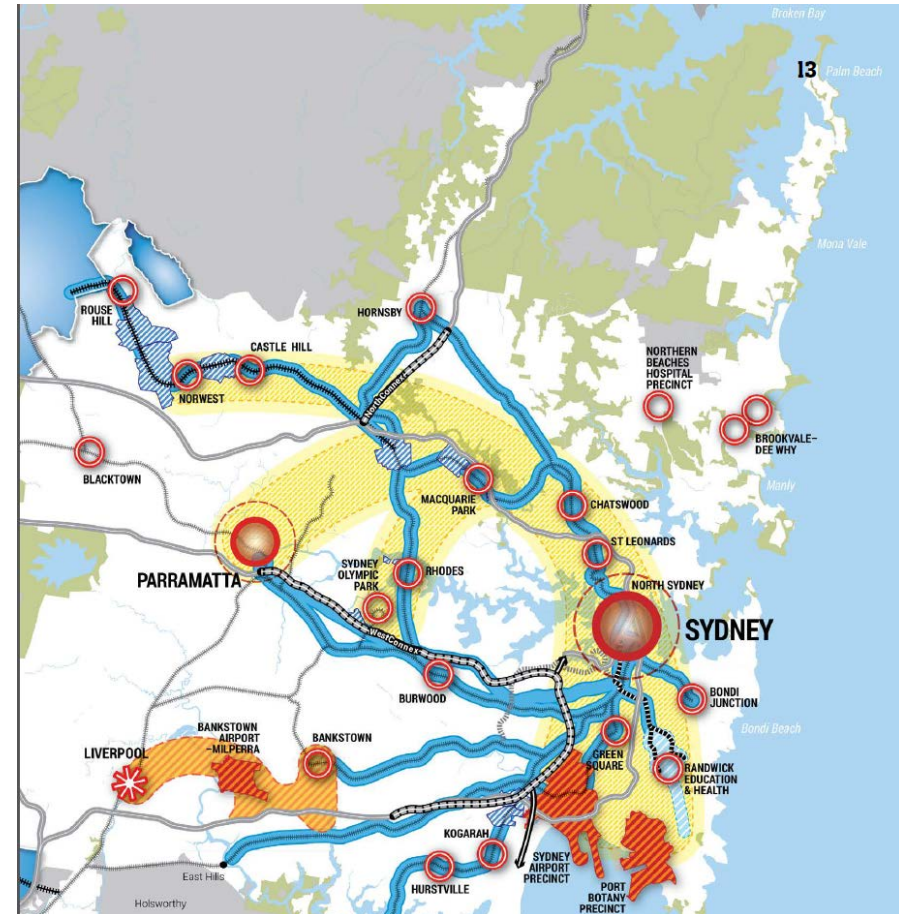
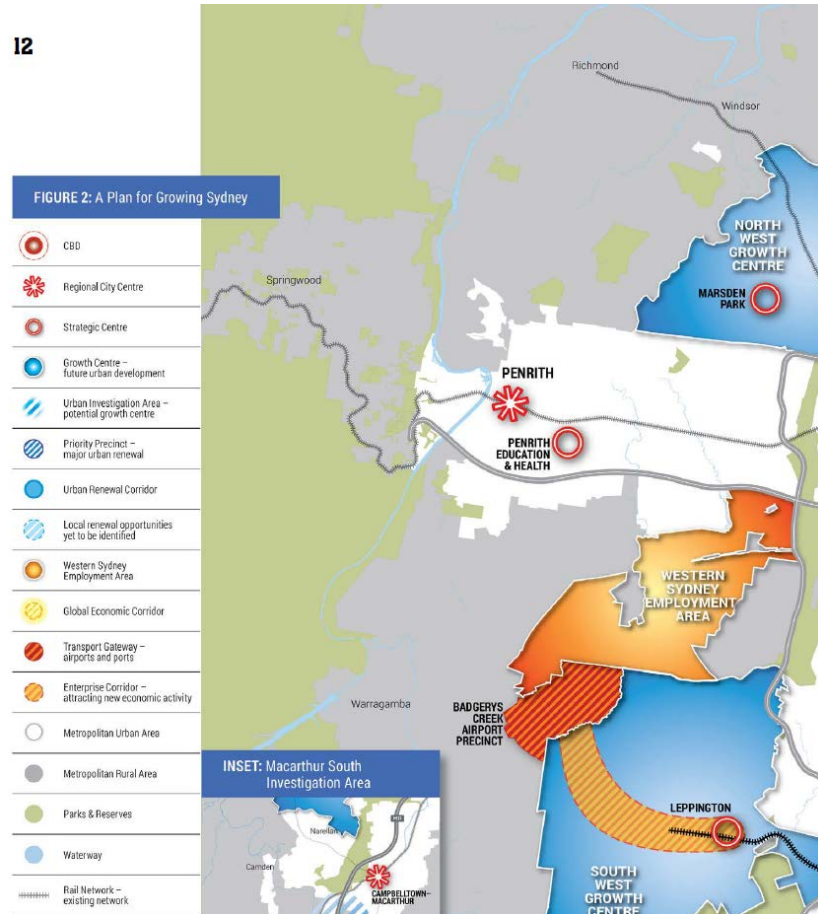
- The area is considered as significant as a corridor of transport connectivity.
- It is designated as an area for health and educational investment
- Hornsby is classified as one of 34 Strategic Centres
- From a sustainability perspective Hornsby is mainly considered Metropolitan rural area and Protected Natural Area and Open Space with an urban corridor.

In short, the residents of Hornsby are on the fringe and are potentially missing out on the substantial development of a city in ten directions: infrastructure, a collaborative city, a city for people, housing the city, a city of great places, a well connected city, jobs and skills for the city, an efficient city and a resilient city.

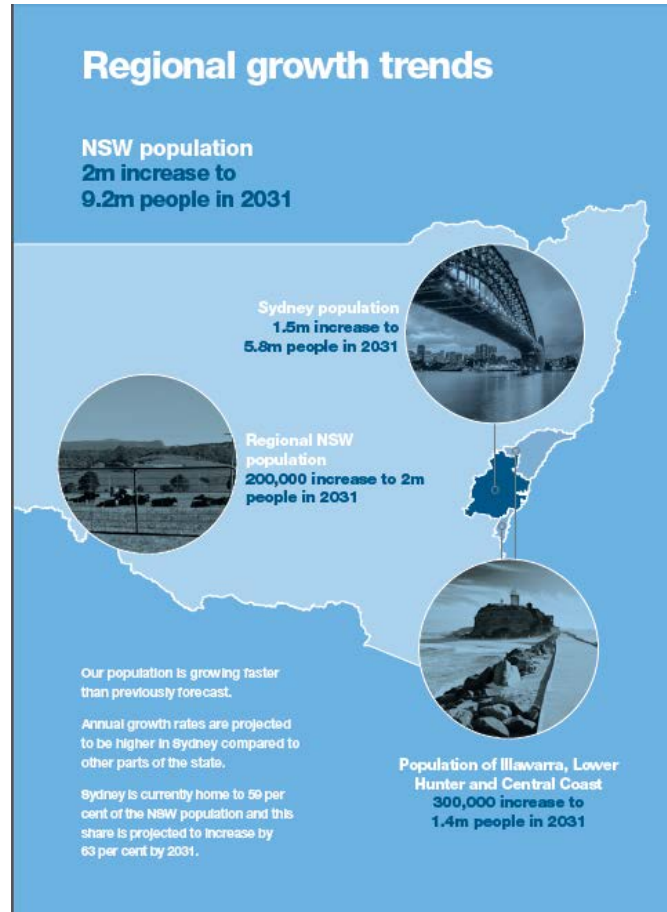
By way of summary I have tried to cherry pick and summarise the key areas of relevance to Hornsby. Following each section are some brief comments.

NSW Government

12



Changing NSW



How we are changing

Very young (under 15) and elderly people (65 and over) will record the biggest growth rates to 2031.



26%
increase in children and youth aged less than 15 by 2031



17%
increase in people aged 15-64 by 2031



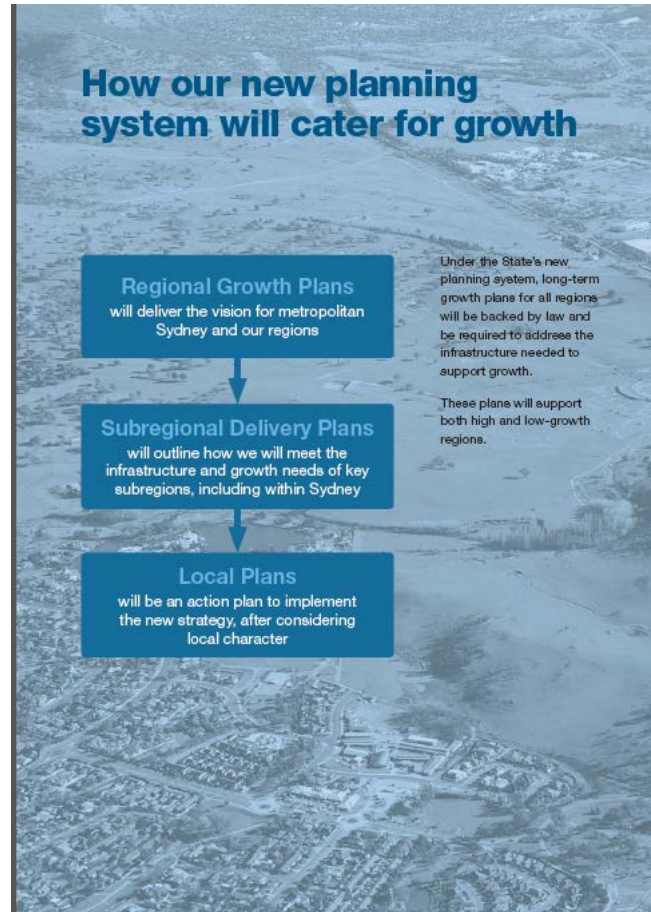
78%
increase in people aged 65 or above by 2031

By 2031 men will live **3.9** years longer – an average of 85.2 years



By 2031 women will live **2.6** years longer – an average age of 88.2 years

Changing NSW



- Show resources in NSW Planning
 - Catchments and harbours
 - Coastal Protection
 - Employment Lands
 - North West Rail
 - North Connex West Connex
 - Ports
 - Regional Landuse
 - Transport
 - NSW 2021

Northern Sydney Regional Action Plan



ABOUT OUR REGION



Northern Sydney is renowned for its high quality lifestyle and environment as well as its status as Australia's 'Silicon Valley', with a number of high-tech and other high quality professional services and education firms and organisations located within the region.

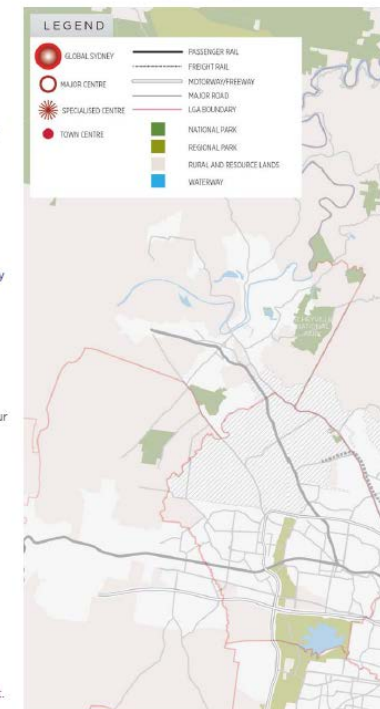
The Northern Sydney region includes the Hornsby Shire, Hunters Hill, Ku-ring-gai, Lane Cove, North Sydney, City of Ryde and Willoughby City Local Government Areas. The region is a key economic driver for Sydney and NSW and a high-tech powerhouse, home to a number of high-tech manufacturing, finance and insurance, education, research, engineering organisations and tourism businesses. The region also contains high quality natural assets and waterways such as the Hawkesbury River, Sydney Harbour and Parramatta River.

Regional overview

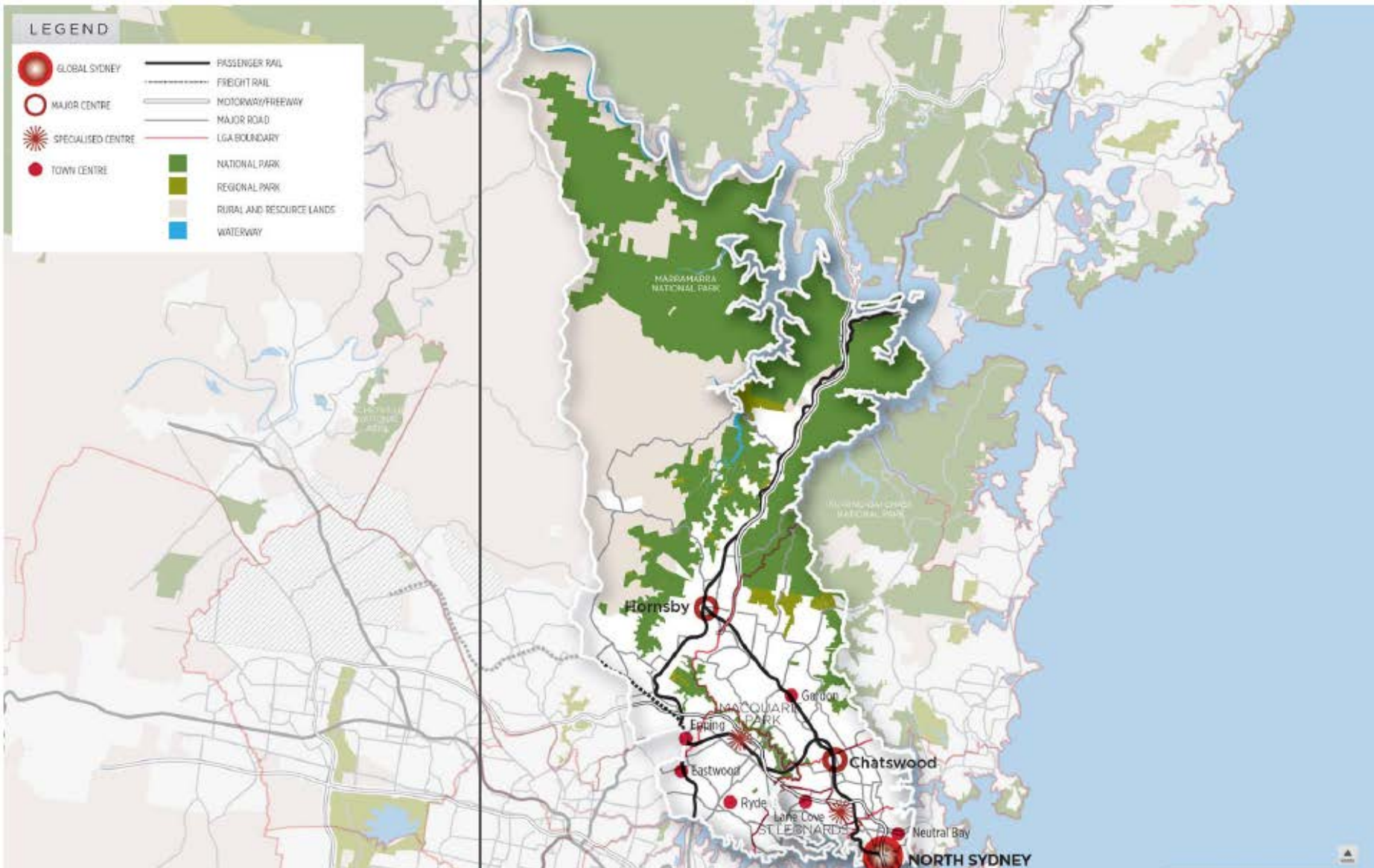
- Highly skilled and competitive workforce with a significant knowledge base
- High quality natural assets such as Ku-ring-gai Chase National Park, waterways such as the Hawkesbury River, Sydney Harbour, Middle Harbour and the Parramatta River foreshore
- Strong sense of community with high levels of volunteering and unpaid work
- Residents have a higher level of income than the NSW average.

Competitive advantages

- North Sydney to Macquarie Park form part of Sydney's Global Economic Corridor
- Key professional services and information and communication technology business clusters
- World-class education and research facilities such as Macquarie University, TAFE, CSIRO and the National Measurement Institute
- High quality health care infrastructure and support.



Northern Sydney Regional Action Plan



Northern Sydney Implementation Priorities

PRIORITY 1

Improve road and public transport connections to other parts of Sydney

Actions	Delivery Lead	Delivery Partners	Timeframe
Continue work on the North West Rail Link	Transport for NSW		Construction due to commence 2014
Develop an Integrated public transport ticketing system	Transport for NSW	Transport Operators (Sydney Ferries, State Transit, RailCorp, and Private Bus Operators)	CityRail, State Transit and Private Bus Operators progressively from mid 2013
Construct dedicated freight rail lines	Transport for NSW	Australian Rail Track Corporation	Northern Sydney Freight Corridor constructed by late 2016
Regional level planning for cycling networks in proximity to employment centres	Transport for NSW	Local councils	Ongoing
Improve performance and monitoring of Metro Bus services	Transport for NSW	Bus Operators	May 2013
M2 Motorway widening project	Transport for NSW		Mid 2013

PRIORITY 2

Build liveable cities

Actions	Delivery Lead	Delivery Partners	Timeframe
Affordable Housing Taskforce and Seniors Housing for the Northern Sydney region	Department of Planning and Infrastructure	Local councils	Report due March 2013
Work with Willoughby City Council to finalise its draft LEP	Department of Planning and Infrastructure	Willoughby City Council	March 2013
Through the Macquarie Park Taskforce, examine the potential for redevelopment of the former Housing NSW site at Ivanhoe Place, Macquarie Park	Department of Finance and Services	Department of Planning and Infrastructure, City of Ryde Council	Review will be finalised by March 2013
Examine the redevelopment of the Parraween Street car park and adjacent site at Cremorne for mixed use development	Department of Planning and Infrastructure	North Sydney Council	June 2014
Deliver funding for enhanced community recreation facilities in the Northern Sydney region	Department of Planning and Infrastructure	Office of Environment and Heritage, Sydney Harbour Federation Trust, local councils	Various
Provide funding to local councils under the NSW Local Infrastructure Renewal Scheme to enhance regional infrastructure, including: <ul style="list-style-type: none"> Asset renewal and upgrade of Ku-ring-gai Council's public toilet amenities and the Gordon Library upgrade Willoughby City Council's Stormwater System Assets Rehabilitation program 	Division of Local Government - Department of Premier and Cabinet	Local councils	Various

Northern Sydney Implementation Priorities

PRIORITY 3

Improve social connections and support for vulnerable communities and the ageing

Actions	Delivery Lead	Delivery Partners	Timeframe
Explore options for a new secondary school in the Lower North Shore	Department of Education and Communities		New possible sites identified by June 2013
Maximise the community's use of public facilities and other spaces	Office of Communities - Department of Education and Communities	Crown Lands, Northern Sydney Local Health District, local councils, non government organisations	Coordinated polices to be complete June 2014
Improved planning and coordination of services working with families and children through: <ul style="list-style-type: none"> Establishment of an expanded regional governance mechanism Development of a regional outcome based plan 	Department of Family and Community Services	North Sydney Local Health District, Department of Education and Communities, NSW Police Force, local councils and non government organisations	June 2014
Develop a Northern Sydney Regional Youth Strategy	Office of Communities - Department of Education and Communities	Education and TAFE, North Sydney Local Health District, Department of Family and Community Services, local councils, non government organisations	June 2014
Increase the capacity of services to support people with a disability through the implementation of Stronger Together Two	Department of Family and Community Services	Local councils and non government organisations	June 2016
Implement the Northern Sydney Local Health District Disability Action Plan	Northern Sydney Local Health District		By 2016
Improve supports for Aboriginal and Torres Strait Island and culturally and linguistically diverse communities	Northern Sydney Local Health District		Recruit Aboriginal Care Coordinator and Aboriginal Community Liaison Officer by March 2013
	Northern Sydney Local Health District	Department of Family and Community Services, NSW Police Force, Department of Education and Communities, Northern Sydney Medicare Local, CentreLink, Department of Immigration and Citizenship, local councils	Northern Sydney Refugee and Humanitarian Entrance Forum by March 2013
	Northern Sydney Local Health District		Pilot for Culturally and Linguistically Diverse (CALD) older people - commence by March 2013
Develop a Northern Sydney Ageing Strategy	Department of Family and Community Services	Transport for NSW, Northern Sydney Local Health District, Department of Planning and Infrastructure, Commonwealth Department of Health and Ageing, local councils, Northern Sydney Regional Organisation of Councils	Strategy completed by September 2013
Take local action to prevent crime through the Safer Community Compacts Program	Department of Attorney General and Justice	Local councils	Ongoing

PRIORITY 4

Increased community access to open space and protect the natural environment and waterways

Actions	Delivery Lead	Delivery Partners	Timeframe
Develop and implement Floodplain Risk Management Studies and Plans	Office of Environment and Heritage	Willoughby City and Hornsby Shire Councils	Floodplain Risk Management Plan for Sugarloaf Creek Catchment - January 2013 Flood study for Hornsby Shire - December 2013
Undertake threatened species recovery actions	Office of Environment and Heritage	Sydney Metropolitan Catchment Management Authority, Hawkesbury - Nepean Catchment Management Authority, Landowners	Ongoing
Upgrade walking tracks in the Bradleys Head section of Sydney Harbour National Park and above Reef Beach	Office of Environment and Heritage	Local councils	December 2014
Develop a regional waste avoidance and resource recovery strategy	Environment Protection Authority	Local councils	December 2013
Sewerage services for the communities of Cowan, Galston and Glenorie	Sydney Water	Department of Finance and Services	Wastewater services for Cowan completed 2014
			Wastewater services for Galston and Glenorie completed June 2015

Northern Sydney Implementation Priorities

PRIORITY 5

Grow the economy

Actions	Delivery Lead	Delivery Partners	Timeframe
Reinvigorate urban centres to create liveable communities and boost the local economy through the Precinct Support Scheme, part of the Urban Activation Precinct Program	Department of Planning and Infrastructure	Local councils	First precincts are scheduled to be announced by March 2013
Finalise new controls with the City of Ryde Council for the Macquarie Park Corridor	Department of Planning and Infrastructure	City of Ryde Council	2013
Contribute funding to the St Leonards/Crows Nest planning study by North Sydney Council	Department of Planning and Infrastructure	North Sydney Council	June 2014
Develop and implement Industry Action Plans to support key industry sectors within the region	NSW Trade & Investment	Commonwealth, State Agencies, local councils, industry associations, community organisations	Implementation in 2013 over the next 10 years
Provide support to small businesses in the Northern Sydney Region through the roll out of the Small Biz Connect program	Small Business Commissioner, NSW Trade & Investment	Business groups, local councils, community organisations	Ongoing
Support increased productivity by cutting government red tape through the establishment of a Service NSW one stop shop in Chatswood	Service NSW - Department of Premier and Cabinet	Roads and Maritime Services, Office of Fair Trading, Office of State Revenue	June 2013

PRIORITY 6

Improve access to healthcare

Actions	Delivery Lead	Delivery Partners	Timeframe
Improved primary health care for the aged through: 1. Development of the Health Contact Centre 2. Implementation of care coordination and coaching for chronic care patients 3. Additional healthcare personnel to assist in dementia and geriatric care	North Sydney Local Health District		1. All aged care service referrals by June 2013 2. Services to commence by March 2013 3. Ongoing
Improve support for younger people through the Forgotten Generation Project	North Sydney Local Health District	Community Youth Health Services	October 2013
Construction of a new 12 bed Inpatient Unit and 35 bed Adult Acute Mental Health Unit at Hornsby Hospital	North Sydney Local Health District	NSW Ministry of Health	Completion expected second half of 2013
Improve access to mental health services and deliver the new Head Space consortium	North Sydney Local Health District	<i>Consortium Partners:</i> Northern Sydney Medicare Local, Sydney North Shore and Beaches Medicare Local, City Council and Steps	Headspace consortium - commence by April 2013
Stage 1 planning for the redevelopment of Hornsby Ku-ring-gai Hospital	Health Infrastructure		March 2013
Support the Northern Health and Medical Research Hub through the development of strategic plans	NSW Office for Health and Medical Research	Northern Sydney Local Health District, University of Sydney, Macquarie University, Kolling Institute, Cancer Institute NSW	The development of the Strategy will commence in late 2012 and be completed in early 2013

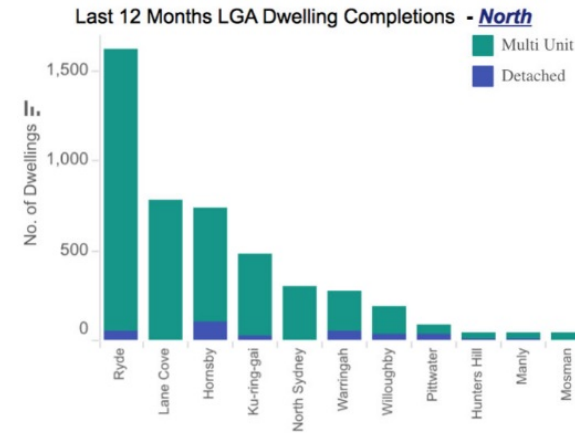
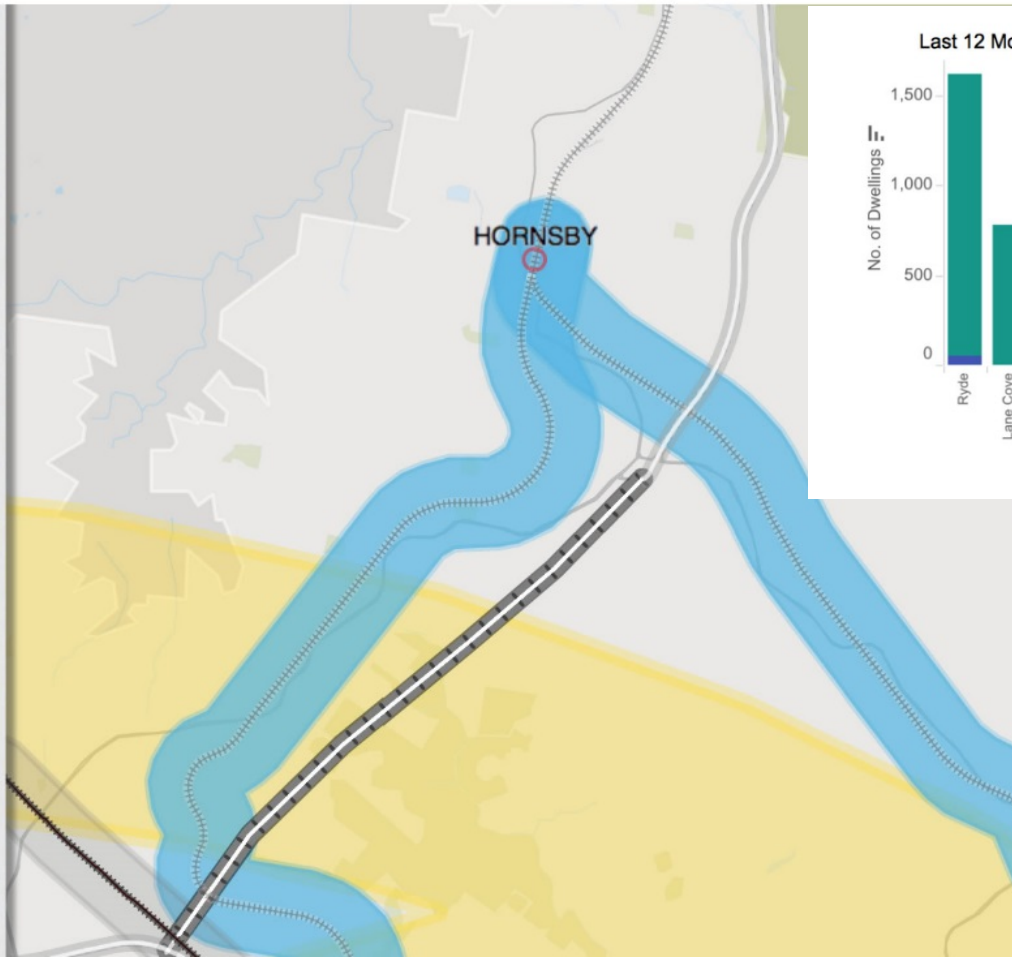
Hornsby area

A Plan for Growing Sydney, released in December 2014, is the NSW Government's plan for the future of the Sydney Metropolitan Area over the next 20 years. The Plan provides key directions and actions to guide Sydney's productivity, environmental management, and liveability – including the delivery of housing, employment, infrastructure and open space.



Legend

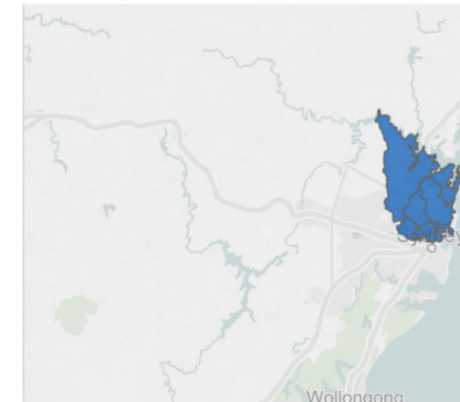
- CBD
- Regional City Centre
- Strategic Centre
- Growth Centre
- Urban Investigation Area
- Priority Precinct
- Urban Renewal Corridor
- Local renewal opportunities yet to be identified
- Western Sydney Employment Area
- Global Economic Corridor




Please hover over the above graph or map to see that latest 12 monthly dwelling completion numbers

District(s) - *North*

- (All)
- Central
- North
- South
- South West
- West
- West Central



Political Local -Hornsby Council



Business Papers and Minutes

Meeting: [All] Business Year: 2016 Month: [All Months] Find

Select the **Business Year** and **Month** you want to choose from and then select **Find**.

Google™ Custom Search

AAAA

Login: _____ Password: _____ Login

Authorised Access

Meeting Date	Meeting	Business Papers	Confirmed Minutes	Attachment
10/02/2016	General Meeting	View PDF (1.6mb)	View PDF (552.1kb)	Attachments Attachments PDF (27.4mb)
10/02/2016 16:33	General Meeting Supplementary uploaded 10/02/2016	View PDF (356.3kb)		
09/03/2016	General Meeting	View PDF (1.6mb)	View PDF (546.2kb)	Attachments Attachments PDF (28.5mb)
09/03/2016 17:06	General Meeting Supplementary uploaded 9/03/2016	View PDF (399.0kb)		
09/03/2016 08:46	General Meeting Supplementary uploaded 10/03/2016	View PDF (351.5kb)		
13/04/2016 11:54	General Meeting Supplementary uploaded 13/04/2016	View PDF (2.0mb)		
13/04/2016	General Meeting	View PDF (2.2mb)	View PDF (570.7kb)	Attachments Attachments PDF (54.1mb)
11/05/2016	General Meeting	View PDF (2.6mb)	View PDF (570.4kb)	Attachments Attachments PDF (34.0mb)
01/06/2016	Workshop	View PDF (4.1mb)	View PDF (480.6kb)	
08/06/2016	General Meeting	View PDF (2.7mb)	View PDF (582.6kb)	Attachments Attachments PDF (41.5mb)
08/06/2016 10:31	General Meeting Supplementary uploaded 8/06/2016	View PDF (411.6kb)		
13/07/2016	General Meeting	View PDF (1.8mb)		Attachments Attachments PDF (44.7mb)
13/07/2016 16:56	General Meeting Supplementary uploaded 13/07/2016	View PDF (364.5kb)		

- > About Council
- > [Access to Information](#)
- > Citizenship Ceremonies
- > Code of Conduct
- > Join the Conversation
- > Contact Us
- > Council Meetings
- > Councillors
- > Fees and charges
- > Forms
- > How Council Works
- > Management
- > New residents
- > Online Services Portal
- > Policies
- > Publications
- > Noticeboard
- > About our Shire
- > Major projects

Council Meetings

The most significant decisions in Hornsby Shire are made at the public Council meetings which are held each month.



All meetings are held in the Council Chambers at 296 Peats Ferry Road (formerly Pacific Highway), Hornsby. The meetings start at 6.30pm.

Schedule of meetings for 2016

General Meetings
Wednesday 10 February 2016
Wednesday 9 March 2016
Wednesday 13 April 2016
Wednesday 11 May 2016
Wednesday 8 June 2016
Wednesday 13 July 2016
Wednesday 10 August 2016
Wednesday 14 September 2016

Political Geography -State



HORNSBY AND KU-RING-GAI COUNCIL MERGER FORUM

HAVE
YOUR SAY!

The Hornsby and Ku-ring-gai Council Merger needs to be open to the Hornsby and Ku-ring-gai Community!

The Baird Liberal Government is ignoring the community and pushing through their forced amalgamation agenda behind closed doors.

Local residents deserve local services and local representation.

Hornsby Labor's Local Government Committee believe that Hornsby and

Political National



- Small business
- Newline Road
- Mobile Blackspots
- Hornsby Hospital

Political –
International
UNO



Martin Pluss

15 views

👍 0 💬 0 ➦ SHARE ≡+ ⋮



IBVM NGO
Published on Dec 1, 2015

SUBSCRIBE 34

Implementation of the 2030 Sustainable Development Agenda

Category Entertainment

License Standard YouTube License

Pennant Hills



- Change is now
- What can I do?
 - Become informed
- What is happening in the area?
- Council Meetings
- Pennant Hills Trust

Hornsby Council Meetings



BUSINESS PAPER

GENERAL MEETING

Wednesday 8 June 2016
at 6:30PM



TABLE OF CONTENTS

AGENDA AND SUMMARY OF RECOMMENDATIONS

RESCISSION MOTIONS

MAYORAL MINUTES

ITEMS PASSED BY EXCEPTION / CALL FOR SPEAKERS ON AGENDA ITEMS

GENERAL BUSINESS

Office of the General Manager

Nil

Corporate Support Division

Item 1	CS15/16 Investments and Borrowings for 2015/16 - Status For Period Ending 30 April 2016	1
Item 2	CS16/16 Adoption of 2016/17 Operational Plan Incorporating the Budget, Fees and Charges and Rating Structure for 2016/17	4
Item 3	CS17/16 Local Government Remuneration Tribunal - 2016 Report and Determination - Mayor and Councillor Fees - 2016/17 Financial Year	16
Item 4	CS18/16 Outstanding Council Resolutions - Period Until 29 February 2016	20
Item 5	CS19/16 Debts To Be Written Off - 2015/16 Financial Year	23
Item 6	CS20/16 Northern Sydney Regional Organisation of Councils - Amendment of Constitution	26

Environment and Human Services Division

Item 7	EH7/16 Tender RFT1/2016 - Mattress Recycling	30
--------	--	----

Planning Division

Item 8	PL38/16 Development Application - Section 96(2) Modification to Approved Residential Flat Buildings Comprising 80 Units - 301-303 Peats Ferry Road, Asquith and 2-4 Lodge Street, Hornsby	34
Item 9	PL39/16 Development Application - Section 96(2) Modification to Approved Residential Flat Buildings Comprising 69 Units - 305 and 307 Peats Ferry Road, Asquith and 9 Bell Street and 4 Lodge Street, Hornsby	73
Item 10	PL40/16 Development Application - Five Storey Residential Flat Building Comprising 41 units - 36 - 40 Lords Avenue, Asquith	114
Item 11	PL46/16 Further Report - Development Application - Dwelling House - 77 Malton Road, Beecroft	160

Political Geography- regional



**KU-RING-GAI TRAFFIC COMMITTEE
TO BE HELD ON THURSDAY, 31 MARCH 2016 AT 9.00AM
CHAMBERS, LEVEL 3 ANTE ROOM**

AGENDA
** ** ** ** **

NOTE: For Full Details, See Council's Website –
www.kmc.nsw.gov.au under the link to business papers



5 April 2016

Discussion points for the Monthly Chronicle

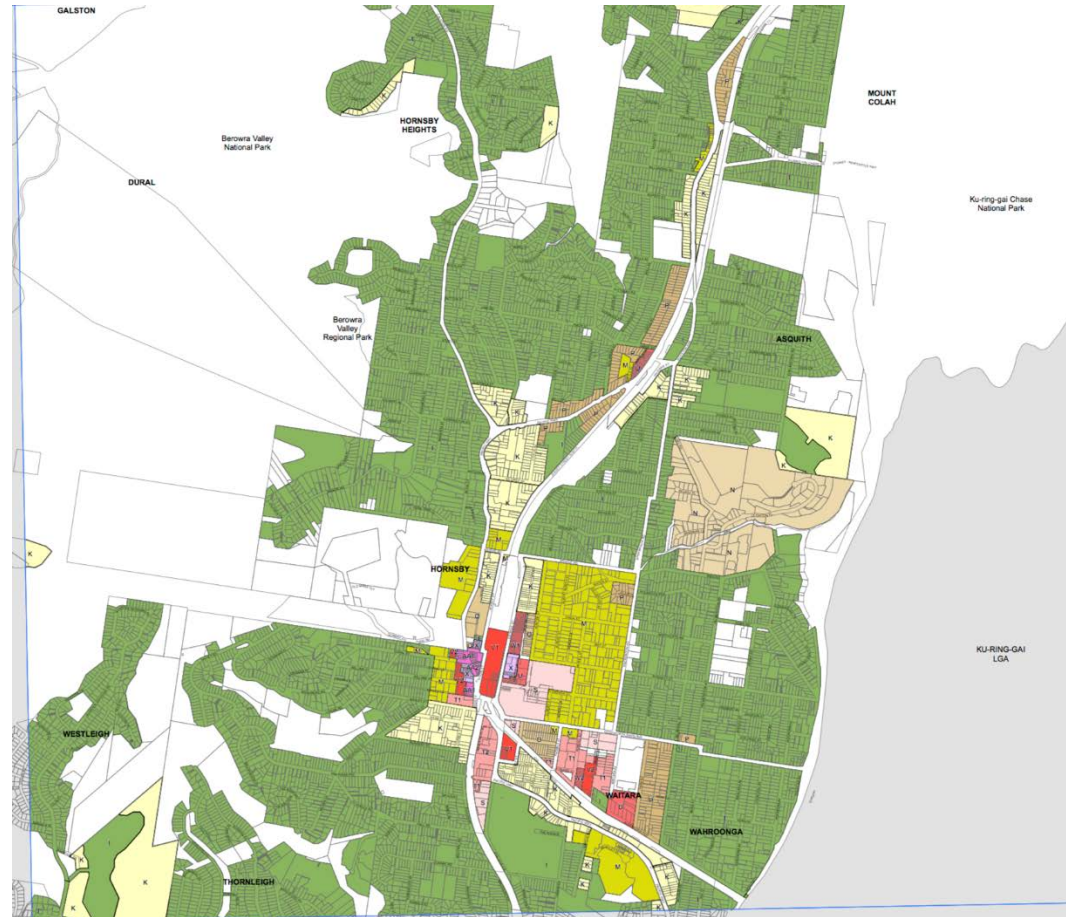
RESIDENTS' INFRASTRUCTURE AND PLANNING ALLIANCE (RIPA)

As a result of development within and adjacent to Hornsby Shire, communities are experiencing increased road congestion and safety issues, overcrowding at schools, pressure on existing community amenities infrastructure and loss of pristine rural lands.

We are told that the new Metrolink train and NorthConnex road tunnel are designed to alleviate road congestion but an increase in density in our suburbs and rural areas will quickly undermine any benefit to congestion they may offer.

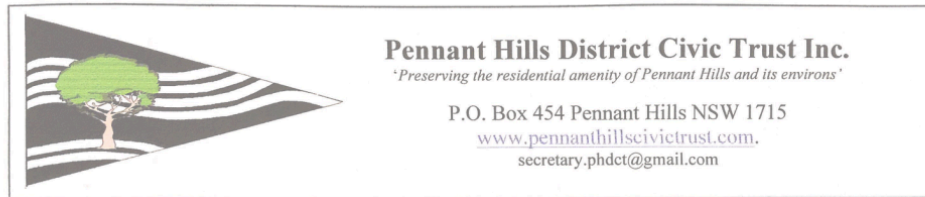
Local community groups have been active fighting individual developments but on February 28 2026 a number have come together to form the Residents' Infrastructure and Planning Alliance (RIPA).

Land Zoning - Hornsby



	Suburb	Number of Units	Address	Comment
January				
February				
	Epping	30	32-34 Essex St	
March	Epping	32	7-9 Essex St	
April				
May	Waitara	39	5-15 Balmoral St	
	Epping	32	9-11 Forest Grove	
June	Asquith	26	24-26 Lords Ave	
	Epping	36	1 Forest Grove	
	Waitara	39	5- 15 Balmoral	
July	Mt Colah	36	6-8 Cowan Rd	
	Epping	33	36-38 Carlingford Rd	
			42c Kent St	
August				
	Hornsby	73	503-532 Pacific Hwy	
			2-4 Werombi Rd	
	Hornsby	80	301-303 Peats Ferry Rd	
	Asquith	69	2, 2a and 4 Lodge s	
			305-307 Peats Ridge Rd	
	Epping	55	27, 29,31 Forest Grove Rd	
	Epping	35	18-20 Cliff Rd	
	Hornsby		228- 235 Pacific Hwy Hornsby	Not passed - site of Toyota Dealership - 7 storeys
September				
	Mt Colah	45	2 Cowan Rd	
	Epping	37	15-17 Forest Grove	
	Epping	27	2-4 Maida	
October				
	Mt Colah	37	522-524 Pacific Hwy	
	Asquith	25	42-44 Lords	
Total		786		

Engagement - Pennant Hills Trust



Council Boundaries Review Submission February 2016

Pennant Hills District Civic Trust INC

This submission is on behalf of the Pennant Hills District Civic Trust INC whose mission is to preserve the qualities of the area, improve the amenity of the area and provide a community voice to achieve these aims. This submission undertakes to comment on the merger proposal document, provide some contextual comments in relation to Pennant Hills and the three prong Mission Statement and to comment briefly on the criteria suggested.

A. Comments on the Merger Proposal

1. Minister's Forward

If the financial benefit, as outlined materialises, there is value in pursuing the ideas provided important non-commercial considerations are taken into account prior to any final decisions.

HORNSBY AND KU-RING-GAI COUNCIL MERGER FORUM

HAVE
YOUR SAY!

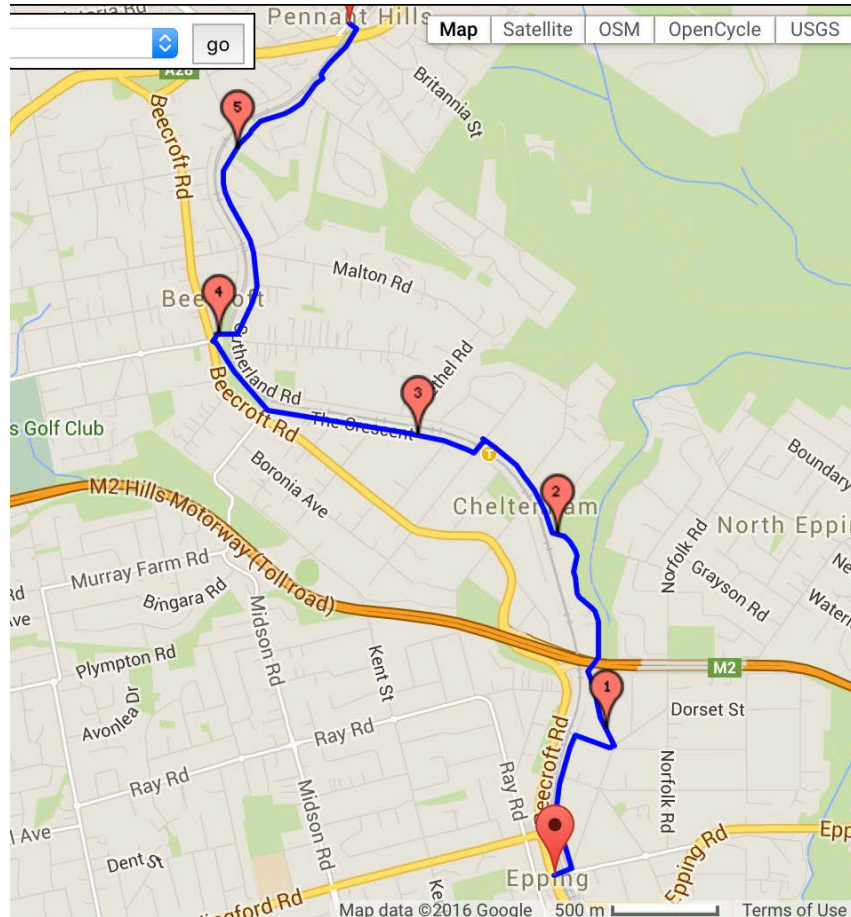
The Hornsby and Ku-ring-gai Council Merger needs to be open to the Hornsby and Ku-ring-gai Community!

The Baird Liberal Government is ignoring the community and pushing through their forced amalgamation agenda behind closed doors.

Local residents deserve local services and local representation.

Hornsby Labor's Local Government Committee believe that Hornsby and

Political local- Epping to Penno Cycle Path



Penno Town Centre Masterplan Survey

Using the following scale indicate the importance of the following *

	Strongly Agree	Agree	Neutral	Disagree	Strongly Disagree
Community social environment	<input type="radio"/>	<input type="radio"/>	<input type="radio"/>	<input type="radio"/>	<input type="radio"/>
Community natural environment	<input type="radio"/>	<input type="radio"/>	<input type="radio"/>	<input type="radio"/>	<input type="radio"/>
Improvements in local mobility	<input type="radio"/>	<input type="radio"/>	<input type="radio"/>	<input type="radio"/>	<input type="radio"/>
Improvements in the number of sporting and cultural facilities	<input type="radio"/>	<input type="radio"/>	<input type="radio"/>	<input type="radio"/>	<input type="radio"/>
Improvements in the quality of sporting and cultural facilities	<input type="radio"/>	<input type="radio"/>	<input type="radio"/>	<input type="radio"/>	<input type="radio"/>
Vision for an integrated housing strategy	<input type="radio"/>	<input type="radio"/>	<input type="radio"/>	<input type="radio"/>	<input type="radio"/>

Community social environment *

	Strongly Agree	Agree	Neutral	Disagree	Strongly Disagree
Pennant Hills needs heart - a mall or a town square	<input type="radio"/>	<input type="radio"/>	<input type="radio"/>	<input type="radio"/>	<input type="radio"/>
Wollundry Park, Community Centre and Library should be better connected to the shopping precinct	<input type="radio"/>	<input type="radio"/>	<input type="radio"/>	<input type="radio"/>	<input type="radio"/>
The shopping precincts of Yarrara Road, Market Place, Pennant Hills Road commercial strip and Hillcrest Arcades should be developed as an integrated business and shopping centre.	<input type="radio"/>	<input type="radio"/>	<input type="radio"/>	<input type="radio"/>	<input type="radio"/>
A multi storey car park would add value to the community heart of Pennant Hills.	<input type="radio"/>	<input type="radio"/>	<input type="radio"/>	<input type="radio"/>	<input type="radio"/>
It would be appropriate to close some streets (Hillcrest) around the town centre for pedestrians and outdoor dining areas.	<input type="radio"/>	<input type="radio"/>	<input type="radio"/>	<input type="radio"/>	<input type="radio"/>

Penno Town Centre Masterplan Survey

Community natural environment *

	Strongly Agree	Agree	Neutral	Disagree	Strongly Disagree
Preserving/adding to the tree density around the Town Centre is a high priority.	<input type="radio"/>	<input type="radio"/>	<input type="radio"/>	<input type="radio"/>	<input type="radio"/>
Future developments should have a higher benchmark for environmental sustainability.	<input type="radio"/>	<input type="radio"/>	<input type="radio"/>	<input type="radio"/>	<input type="radio"/>
Future multi storey developments should contribute to shared public space for community use.	<input type="radio"/>	<input type="radio"/>	<input type="radio"/>	<input type="radio"/>	<input type="radio"/>
The provision of walking trails, urban bike paths should be a focus of future developments.	<input type="radio"/>	<input type="radio"/>	<input type="radio"/>	<input type="radio"/>	<input type="radio"/>
Pennant Hills should remain as a local rather than a regional shopping centre in tune with the local environment.	<input type="radio"/>	<input type="radio"/>	<input type="radio"/>	<input type="radio"/>	<input type="radio"/>

Additional comments on community natural environment

Your answer

Are you a member of the Pennant Hills District Civic Trust *

- Yes
- No

What street do you live in? - optional

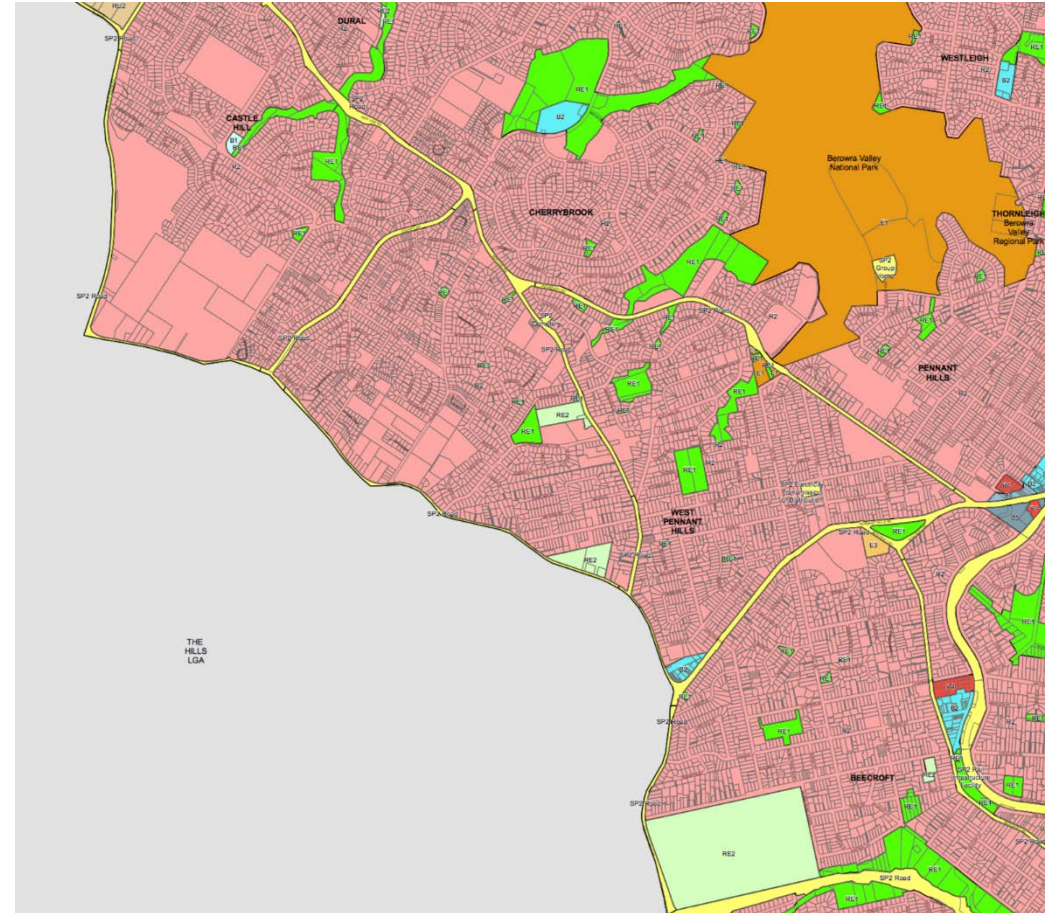
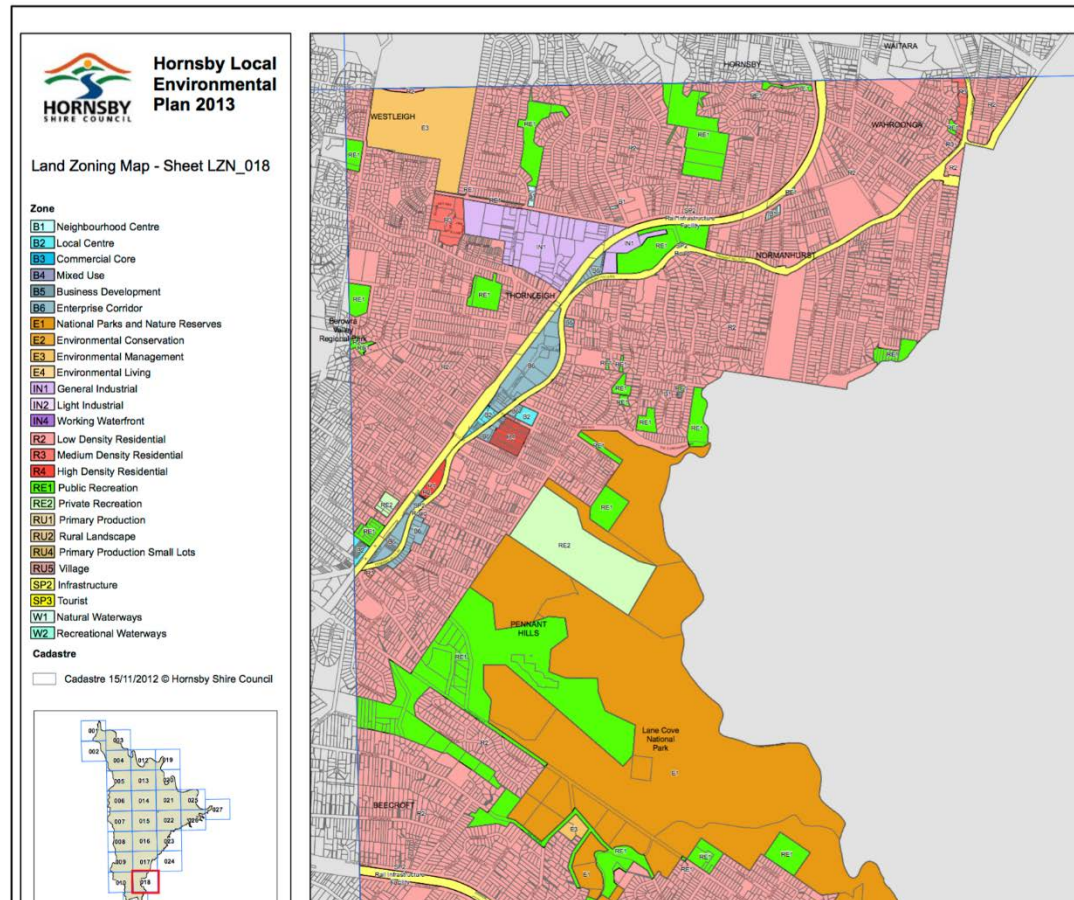
Your answer

What type of housing do you live in? - optional

- Low density - single standing home
- Medium density - townhouse, villa
- High density - apartment
- Other :

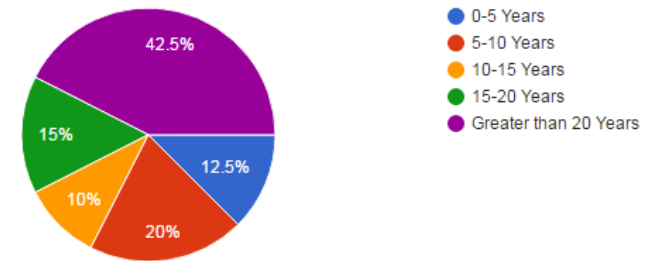
SUBMIT

Pennant Hills Land Zoning

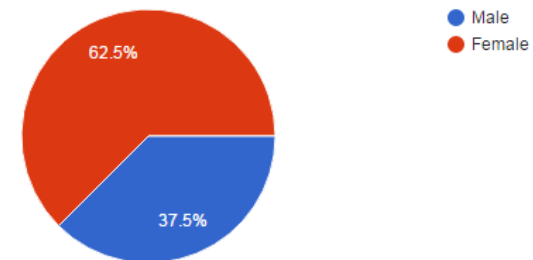


Penno Survey Questions

How long have you lived in Pennant Hills? (40 responses)



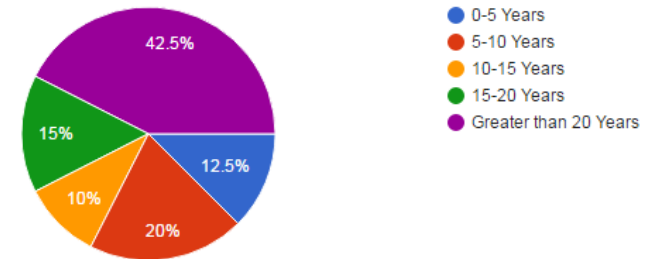
Gender (40 responses)



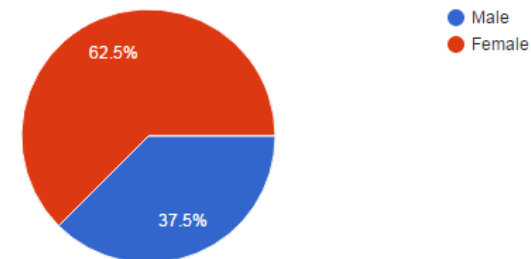
Penno Survey Results

- <https://docs.google.com/forms/d/1FKh92IEUHqUz0Vm5dGmiqgZL-6X4-LI6KgingrYTCs/edit#responses>

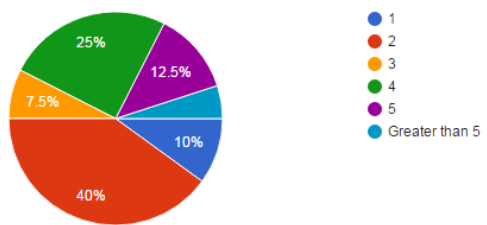
How long have you lived in Pennant Hills? (40 responses)



Gender (40 responses)

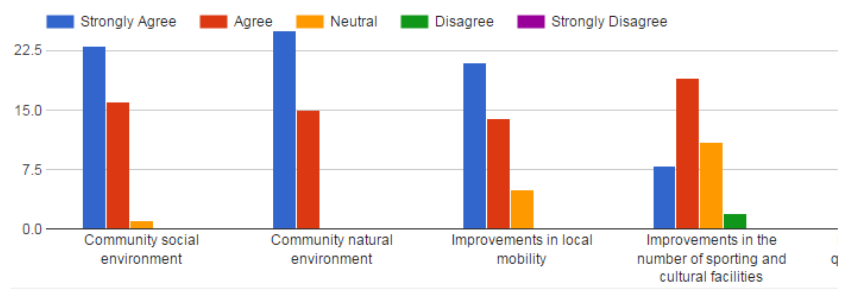


How many people live in your home? (40 responses)

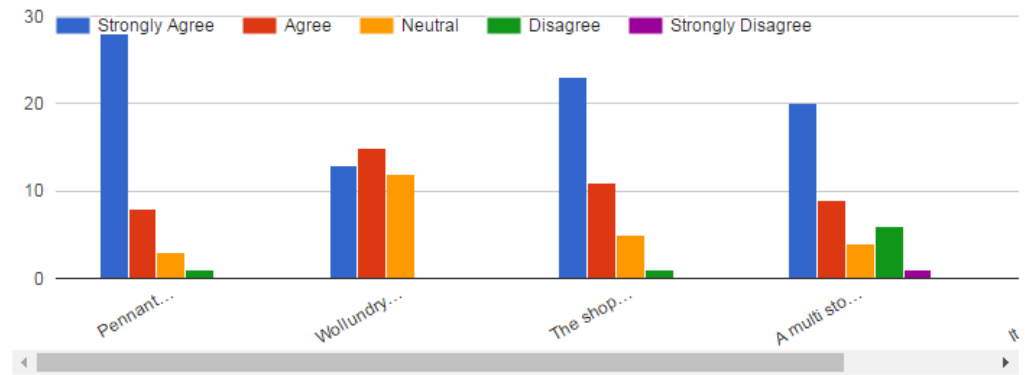


Context to the following questions.

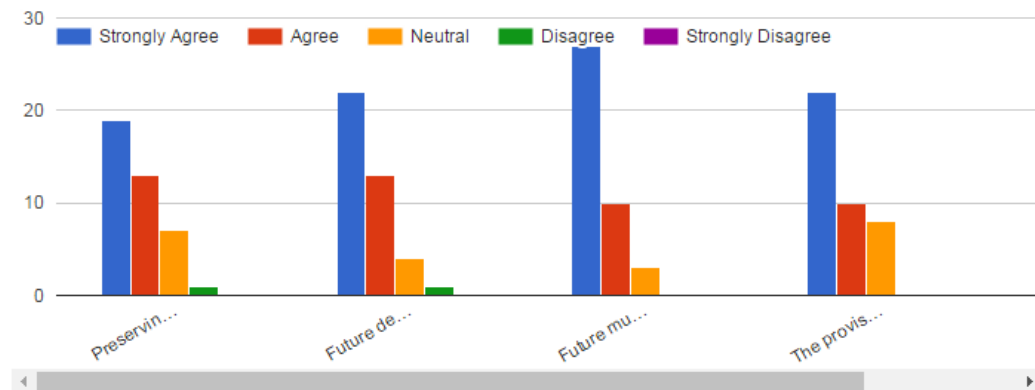
Using the following scale indicate the importance of the following



Community social environment



Community natural environment



Probably Ramsay Road as well

More all day car parking to accomodate people who catches the train is needed.

Any new proposals , especially in the nature of overarching plans, should be tested with the local community before HSC votes on them

May be only one side of streets should be all day parking so residents can park in own streets. We should also try to reduce number of people who use side streets to avoid Yarra rd. May be no right turns or speed humps to reduce speed. Eg into Rosemount Ave

Increasing parking near the railway and shopping centre should be done with a long term strategy in mind. There definitely should be provision of increased parking, but it should be done with a long term strategy in mind for management of the traffic flow, particularly considering management of the traffic flow which currently comes from the back streets from Hornsby via Normanhurst and Thornleigh. The intended strategy for that traffic should be explicit and decided along with the plans for designing the changes to community facilities. i.e. is the intention to guide traffic back to Pennant Hills Road, based on the expected reduction in traffic due to use of the tunnel currently under construction ? If so, what is the expectation for traffic coming south along Yarrara road ? Long term usability of the community facilities should consider inclusion of access to and from Pennant Hills station - e.g. meeting friends visiting pennant hills and using the community facilities, including shops, cafes, etc. together, to grow the strength and vitality of this area. With this in mind, I have set the importance of a multi storey car park as being neutral, rather than strongly agree - it would be good, but needs to be done with a plan, not as an end in itself, and in a way which will facilitate future growth, and not constrain future flexibility for growth.

IBVM at the United Nations
Update No 16. 11/15

It's your World

"The principles of [the charter of the United Nations] are, by far, greater than the Organization in which they are embodied, and the aims which they are to safeguard are holier than the policies of any single nation or people." - Statement by Dag Hammarskjöld in the General Assembly, 31 October 1956

Our Network has been a hive of activity in recent months. We combined the commemoration of the 70th Anniversary of the United Nations and the adoption of the new Sustainable Development Agenda with four international webinars on the new Sustainable Development Agenda. We are aware that this endeavor involves everybody and, therefore, our initiative was "for the people and by the people". Members of our network agreed to inform themselves and share their knowledge with others from around the world.



Many people collaborated to make both the **Webinars** and the video **What We Think** possible. The UN Province Representatives invited speakers from their national networks with the task of ensuring that communication flowed. Emails bounced back and forth - it was a challenge to ensure communication in different parts of the world. The speakers committed themselves to some background study and a more in-depth study of the final United Nations document. The speakers from Latin America included teachers, students and friends from the Congregation of

...and now the AC

Years 7-10 Outcomes, Content Focus and Geographical Inquiry Skills

Stage 4	Year 7	Martin Pius Loreto Normanhurst
<p><u>Stage statement</u></p> <p>By the end of Stage 4, students describe geographical processes that influence the features and characteristics of places and environments across a range of scales. They describe how places are perceived and valued differently and explain interconnections within environments and between people, places and environments. Students investigate environmental change and differences in human wellbeing and discuss strategies for addressing geographical challenges, taking into account environmental, economic and social factors.</p> <p>Students undertake geographical inquiry to build knowledge and understanding of people, places and environments through the collection, collation and analysis of primary data and secondary information. Students propose explanations for spatial distributions, patterns and trends and infer relationships. They propose solutions, and may take action to address contemporary geographical challenges and predict outcomes. Students participate in fieldwork to collect primary data and develop their personal capabilities and workplace skills</p>		
<p><u>Content focus</u></p> <p><u>Landscapes and Landforms</u></p> <p>Students explore landscapes and landforms using examples from Australia and throughout the world. They explain processes that create landscapes and shape individual landforms and they describe the value of landscapes and landforms to different people. Students examine issues of landscape degradation and ways to manage and protect landscapes and landforms. Students also investigate a natural hazard associated with landscapes and people's responses to that hazard.</p>	<p><u>Outcomes</u></p> <p>GE4-1 locates and describes the diverse features and characteristics of a range of places and environments</p> <p>GE4-2 describes processes and influences that form and transform places and environments</p> <p>GE4-4 examines perspectives of people and organisations on a range of geographical issues</p> <p>GE4-5 discusses management of places and environments for their sustainability</p> <p>GE4-7 acquires and processes geographical information by selecting and using geographical tools for inquiry</p> <p>GE4-8 communicates geographical information using a variety of strategies</p> <p>Related Life Skills outcomes: GELS-1, GELS-2, GELS-4, GELS-5, GELS-7, GELS-8</p>	<p><u>Geographical inquiry and skills</u></p> <p><u>Acquiring geographical information</u></p> <ul style="list-style-type: none"> develop geographically significant questions and plan an inquiry, using appropriate geographical methodologies and concepts (ACHGS047, ACHGS055) collect, select and record relevant geographical data and information, using ethical protocols, from appropriate primary data and secondary information sources (ACHGS048, ACHGS056) <p><u>Processing geographical information</u></p> <ul style="list-style-type: none"> evaluate information sources for their reliability and usefulness (ACHGS049, ACHGS057) represent data in a range of appropriate forms, with and without the use of digital and spatial technologies (ACHGS049, ACHGS057) represent the spatial distribution of different types of geographical phenomena by constructing maps at different scales that conform to cartographic conventions, using spatial technologies as appropriate (ACHGS050, ACHGS058) analyse geographical data and other information using qualitative and quantitative methods, and digital and spatial technologies as appropriate, to identify and propose explanations for spatial distributions, patterns and trends and infer relationships (ACHGS051, ACHGS059) apply geographical concepts to draw conclusions based on the analysis of the data and information collected (ACHGS052, ACHGS060) <p><u>Communicating geographical information</u></p> <ul style="list-style-type: none"> present findings, arguments and ideas in a range of communication forms selected to suit a particular audience and purpose; using geographical terminology and digital technologies as appropriate (ACHGS053, ACHGS061) reflect on their learning to propose individual and collective action in response to a contemporary geographical challenge, taking account of environmental, economic and social considerations, and predict the expected outcomes of their proposal (ACHGS054, ACHGS062)
<p><u>Place and liveability</u></p> <p>Students discuss factors that influence people's perceptions of the liveability of places. They investigate features and characteristics of places across a range of scales that support and enhance people's wellbeing such as community identity, environmental quality and access to services and facilities. Students assess the liveability of places and propose strategies to enhance the liveability of a place in Australia.</p>	<p><u>Outcomes</u></p> <p>GE4-1 locates and describes the diverse features and characteristics of a range of places and environments</p> <p>GE4-3 explains how interactions and connections between people, places and environments result in change</p> <p>GE4-4 examines perspectives of people and organisations on a range of geographical issues</p> <p>GE4-6 explains differences in human wellbeing</p> <p>GE4-7 acquires and processes geographical information by selecting and using geographical tools for inquiry</p> <p>GE4-8 communicates geographical information using a variety of strategies</p> <p>Related Life Skills outcomes: GELS-1, GELS-3, GELS-4, GELS-6, GELS-7, GELS-8</p>	<p><u>Geographical inquiry and skills</u></p> <p><u>Acquiring geographical information</u></p> <ul style="list-style-type: none"> develop geographically significant questions and plan an inquiry, using appropriate geographical methodologies and concepts (ACHGS047, ACHGS055) collect, select and record relevant geographical data and information, using ethical protocols, from appropriate primary data and secondary information sources (ACHGS048, ACHGS056) <p><u>Processing geographical information</u></p> <ul style="list-style-type: none"> evaluate information sources for their reliability and usefulness (ACHGS049, ACHGS057) represent data in a range of appropriate forms, with and without the use of digital and spatial technologies (ACHGS049, ACHGS057) represent the spatial distribution of different types of geographical phenomena by constructing maps at different scales that conform to cartographic conventions, using spatial technologies as appropriate (ACHGS050, ACHGS058) analyse geographical data and other information using qualitative and quantitative methods, and digital and spatial technologies as appropriate, to identify and propose explanations for spatial distributions, patterns and trends and infer relationships (ACHGS051, ACHGS059) apply geographical concepts to draw conclusions based on the analysis of the data and information collected (ACHGS052, ACHGS060) <p><u>Communicating geographical information</u></p> <ul style="list-style-type: none"> present findings, arguments and ideas in a range of communication forms selected to suit a particular audience and purpose; using geographical terminology and digital technologies as appropriate (ACHGS053, ACHGS061) reflect on their learning to propose individual and collective action in response to a contemporary geographical challenge, taking account of environmental, economic and social considerations, and predict the expected outcomes of their proposal (ACHGS054, ACHGS062)

...and now the AC

Geography Years 7-10 Matrix

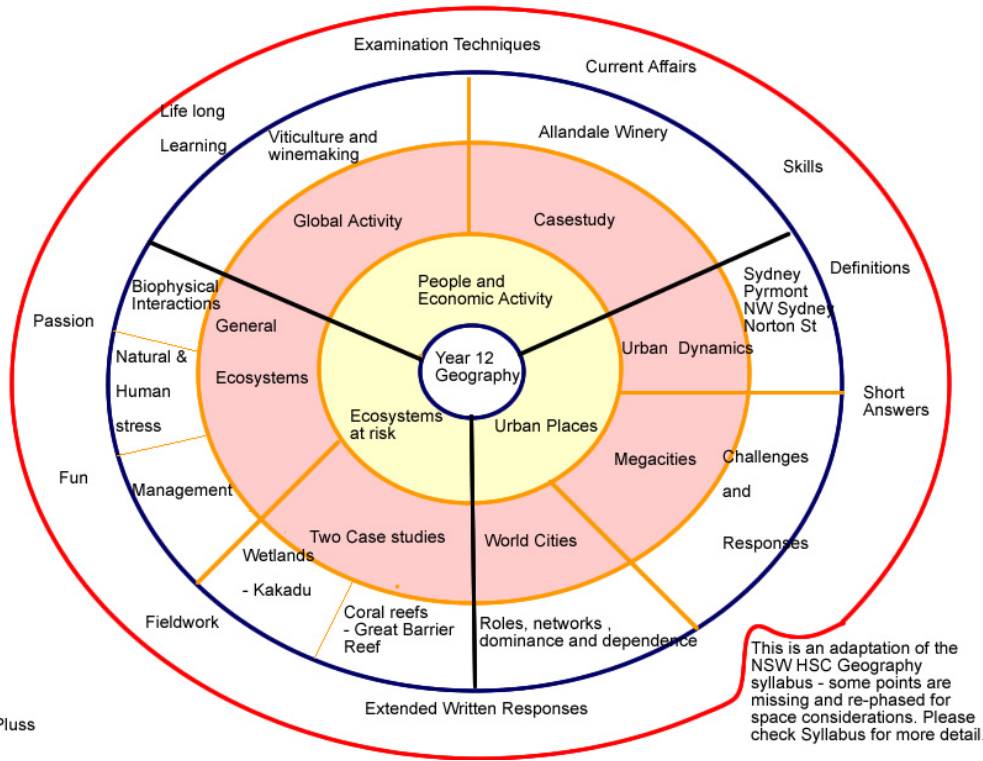
Stage 4	Year 7	Martin Pluss Loreto Normanhurst
Landscapes and Landforms	Key Inquiry Questions	
<p>Landscapes and landforms</p> <ul style="list-style-type: none"> Investigate different landscape and the geomorphic processes that create distinctive landforms , for example: (ACHGK048, ACHGK050) Identification of a variety of landscapes and landforms explanation of geomorphic processes that create landforms eg weathering, erosion, deposition, tectonic activity examination of ONE landscape and its distinctive landforms <p>Value of landscapes and landforms</p> <ul style="list-style-type: none"> Investigate the aesthetic, cultural, spiritual and economic value of landscapes and landforms for people, including Aboriginal and Torres Strait Islander Peoples, for example: (ACHGK045) explanation of the aesthetic value of landscapes and landforms to culture and identity description of the cultural and spiritual value of landscapes or landforms in different places Identification of how a landscape can have economic value for different people <p>Changing landscapes</p> <ul style="list-style-type: none"> Investigate the human causes and effects of land degradation, for example: (ACHGK051) Identification of the ways people utilise and change landscapes description of the impact of a range of human activities on landscapes examination of ONE type of landscape degradation including its spatial distribution, causes and impact <p>Landscape management and protection</p> <ul style="list-style-type: none"> Investigate ways people, including Aboriginal and Torres Strait Islander Peoples, manage and protect landscapes, for example: (ACHGK052) description of the nature and extent of landscape protection across a range of scales eg locally protected places, national parks, world heritage listing examination of management and protection strategies for ONE landscape assessment of the contribution of Aboriginal and Torres Strait Islander Peoples' knowledge to the use and management of an Australian landscape or landform <p>Geomorphic hazard</p> <ul style="list-style-type: none"> Investigate ONE contemporary geomorphic hazard including causes, impacts and responses, for example: (ACHGK053) description of the spatial distribution of the disaster explanation of geomorphic processes causing the disaster and its impacts examination of the responses of individuals, groups and government to the impact of the disaster discussion of management strategies to reduce the future impact of similar natural hazard events including the role of technology in monitoring and predicting geomorphic hazards 	<ul style="list-style-type: none"> Why is there a diversity of landscapes and landforms on Earth? What environmental and human processes form and transform landscapes and landforms? Why do people value landscapes and landforms? To what extent are landscapes and landforms sustainably managed and protected? <p>Local and regional context</p>	<p>Geographical Concepts</p> <ul style="list-style-type: none"> Place Space Environment Interconnection Scale Sustainability change <p>Geographical Inquiry Skills</p> <ul style="list-style-type: none"> Acquiring Processing communicating <p>Geographical Tools</p> <ul style="list-style-type: none"> Maps M Fieldwork F Graphs and statistics GS Spatial Technologies ST Visual Representations <p>General Capabilities</p> <ul style="list-style-type: none"> Literacy Numeracy Information and Communication Technology (ICT) capability Critical and creative thinking Personal and social capability Ethical understanding Intercultural understanding

Apple Music

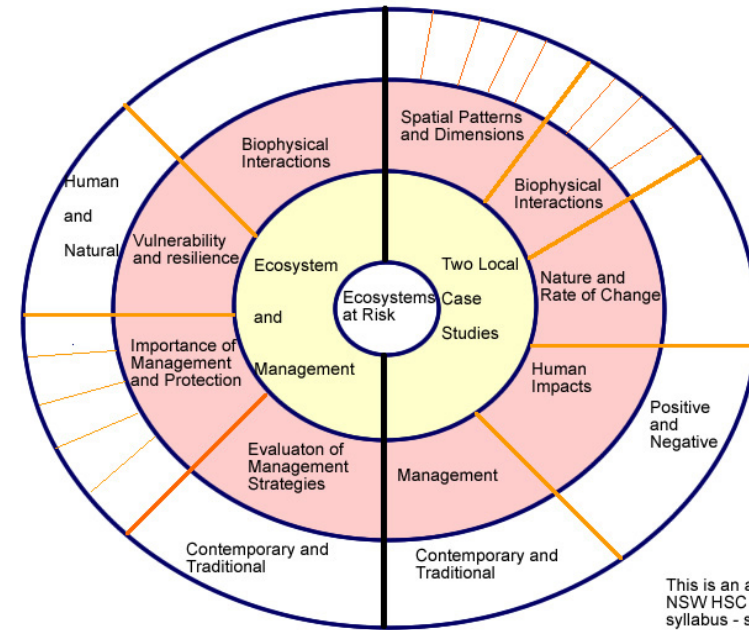
- Beach House in the Blue Mountains

- Toms Diner

HSC Syllabus Guides

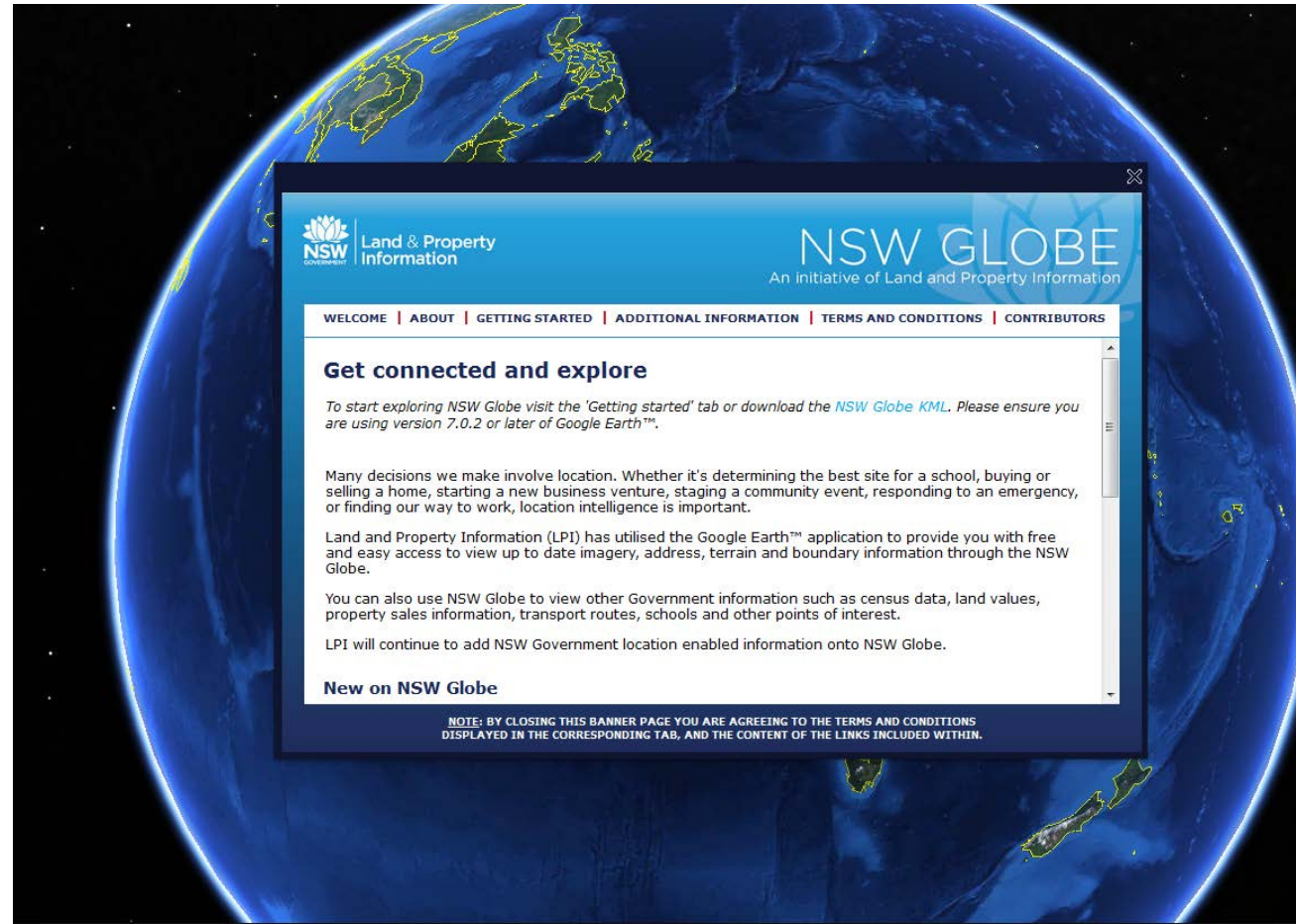


Martin Pluss



Martin Pluss

NSW Globe



The image shows a satellite view of the Earth with a semi-transparent banner overlaid. The banner has a blue header with the NSW Government logo and 'Land & Property Information' on the left, and 'NSW GLOBE' with the subtitle 'An Initiative of Land and Property Information' on the right. Below the header is a navigation menu with links: WELCOME | ABOUT | GETTING STARTED | ADDITIONAL INFORMATION | TERMS AND CONDITIONS | CONTRIBUTORS. The main content area is titled 'Get connected and explore' and contains several paragraphs of text. At the bottom of the banner is a small note about terms and conditions.

NSW GLOBE
An Initiative of Land and Property Information

WELCOME | ABOUT | GETTING STARTED | ADDITIONAL INFORMATION | TERMS AND CONDITIONS | CONTRIBUTORS

Get connected and explore

To start exploring NSW Globe visit the 'Getting started' tab or download the [NSW Globe KML](#). Please ensure you are using version 7.0.2 or later of Google Earth™.

Many decisions we make involve location. Whether it's determining the best site for a school, buying or selling a home, starting a new business venture, staging a community event, responding to an emergency, or finding our way to work, location intelligence is important.

Land and Property Information (LPI) has utilised the Google Earth™ application to provide you with free and easy access to view up to date imagery, address, terrain and boundary information through the NSW Globe.

You can also use NSW Globe to view other Government information such as census data, land values, property sales information, transport routes, schools and other points of interest.

LPI will continue to add NSW Government location enabled information onto NSW Globe.

New on NSW Globe

NOTE: BY CLOSING THIS BANNER PAGE YOU ARE AGREEING TO THE TERMS AND CONDITIONS DISPLAYED IN THE CORRESPONDING TAB, AND THE CONTENT OF THE LINKS INCLUDED WITHIN.